

MONOGRAM







CONTENTS

8 COOKING

14	PROFESSIONAL RANGES		58	INDUCTION AND ELECTRIC COOKTOPS	
	48", 36" and 30" Professional ranges	18-21		Induction cooktops	62-65
22	WALL OVENS			Digital electronic cooktops	66-67
	European and professional convection wall ovens	26-29	68	VENTILATION SYSTEMS	
	Electronic convection wall ovens	30-31		Chimney hoods	72-75
32	COMPANION COOKING			Professional hoods	76-79
	Wall ovens with Advantium® Speedcook technology	36-41		Custom hood inserts and telescopic downdraft vents	80-83
	Above-the-cooktop ovens with Advantium Speedcook technology	42-43	84	PROFESSIONAL OUTDOOR GRILLS	
	Microwave ovens and warming drawers	44-45		Built-in grills and outdoor accessories	88-91
46	PROFESSIONAL RANGETOPS AND GAS COOKTOPS				
	48" and 36" professional rangetops	50-53			
	Stainless steel gas cooktops	54-57			

92 REFRIGERATION

92	REFRIGERATION	
	Customization options	98-101
	Fully integrated 30" customizable refrigerators	106-109
	Built-in side-by-side refrigerators	110-113
	Built-in French-door bottom-freezer refrigerators	114-117
	Built-in bottom-freezer refrigerators	118-121
	Built-in all-refrigerators and all-freezers	122-125
	Free-standing French-door bottom-freezer refrigerators	126-129
	Free-standing side-by-side refrigerator	130-131

132 REFRIGERATION MODULES

	Double-drawer refrigerator	136-139
	Fresh-food refrigerator	140-141
	Bar refrigerator with icemaker	142-143
	Outdoor/indoor refrigerator	144-145
	Wine reserves	146-147
	Beverage centers	148-151
	Icemakers	152-153

154 CLEANING

	Dishwashers	162-165
	18" Dishwashers	168-169
	Compactors	170-171

172 SPECIFICATIONS

194 ACKNOWLEDGEMENTS





COOKING



Much of the joy of cooking comes from the process of learning something new. Award-winning technology and an array of versatile features give you carte blanche to indulge in all forms of experimentation. Try your hand at panna cotta. Practice the gentle arts of poaching and caramelizing. Revisit comfort foods from your youth. With Monogram®, you can feel like a chef in your own kitchen.







DISCOVER THE RECIPE FOR PERFECTION

Like a recipe that has been perfected over generations, Monogram® professional ranges are the culmination of a 100-year tradition of GE cooking-product innovation. This rich and unparalleled legacy, combined with years of intensive research and development, makes Monogram ranges the choice for restaurant-caliber cooking in the home.







PROFESSIONAL RANGES



ZDP484NGPSS dual-fuel (natural gas)
48" range with four gas burners, a grill and a griddle



ZDP486NRPSS dual-fuel (natural gas)
48" range with six gas burners and a grill



ZDP486NDPSS dual-fuel (natural gas)
ZGP486NDRSS all-gas (natural gas)
ZGP486LDRSS all-gas (liquid propane)
48" range with six gas burners and a griddle



ZDP364NRPSS dual-fuel (natural gas)
36" range with four gas burners and a grill



ZDP364NDPSS dual-fuel (natural gas)
ZGP364NDRSS all-gas (natural gas)
ZGP364LDRSS all-gas (liquid propane)
36" range with four gas burners and a griddle



ZDP366NPSS dual-fuel (natural gas)
ZGP366NRSS all-gas (natural gas)
ZGP366LRSS all-gas (liquid propane)
36" range with six gas burners



ZDP304NPSS dual-fuel (natural gas)
ZGP304NRSS all-gas (natural gas)
ZGP304LRSS all-gas (liquid propane)
30" range with four gas burners



ZXRILL – Grill accessory available for all-gas models.

Complete features and specifications on pgs. 172–173.
For guidelines on pairing hoods with cooking equipment, refer to pg. 184.



Certified Sabbath mode—all Monogram® Professional ranges



Monogram professional Reverse-Air convection oven system in all dual-fuel models provides even browning and baking. Monogram professional dual-burner bake system in all-gas models combines Reverse-Air convection, infrared and conventional heating technology to provide superb results, with minimal preheating. Caterer's oven in 48" and 36" models is uniquely sized to accommodate three full-size sheet trays, and an everyday oven in 48" models is just the right size for 9" x 13" casserole dishes.

Sealed, dual-flame stacked burners provide complete low-simmer-to-rapid-boil flexibility (140°F simmer to 18,000 BTUs*). The burners are sealed to the recessed cooktop for easy cleaning.

*Natural gas



Ceramic-infrared grill has 15,000* BTUs of adjustable heat. The grill grate is grooved on one side to channel juices from seasoned or marinated foods. Turning the grate over, with the bars positioned rounded side up, allows grilling and searing of delicate foods.

*Natural gas



Reversible burner grates are flat on one side and uniquely contoured on the other to accommodate various-sized woks.



Stainless steel and aluminum-clad griddle offers 18,000 BTUs* of cooking power, allowing fast and consistent heating across the entire cooking surface.

*Natural gas





SIMPLICITY GIVES RISE TO PERFECTION

The design simplicity of Monogram® wall ovens takes shape in many powerful ways, from sleekly styled European ovens with touchscreen controls to professional models with sculptural lines and angles. Open the doors and the possibilities expand even further. True European Convection with Direct Air technology uses a bidirectional fan to promote even air and heat circulation for perfect cooking results.







CONVECTION WALL OVENS WITH ELECTRONIC AND DIAL CONTROLS

European



ZET2SHSS 30" stainless steel European double oven, 5.0 cu. ft. capacity (each oven)



ZET1SHSS 30" stainless steel European single oven, 5.0 cu. ft. capacity



Notification lighting allows you to check cooking status with a quick glance. Not available on ZET1FHSS model

Professional



ZET2PHSS 30" stainless steel professional double oven, 5.0 cu. ft. capacity (each oven)



ZET1FHSS 30" stainless steel French-door professional single oven, 5.0 cu. ft. capacity



All-glass interior door offers a visually striking look that's easy to clean. Not available on ZET1FHSS model



ZET1PHSS 30" stainless steel professional single oven, 5.0 cu. ft. capacity

- WiFi Connect** allows you to control oven functions from anywhere inside or even outside your home, using your smartphone or other web-enabled mobile device.
- Theatre-style LED oven lighting** located on both sides of the oven to enhance visibility and provide a clear view of food, regardless of rack position.
- Self-clean with Steam Clean option** gives you flexible options for thorough oven cleaning.

Complete features and specifications on pg. 174.

French door design inspired by commercial kitchen designs, the precision engineered chain-drive mechanism allows for one-hand opening of both doors at the same time. (ZET1FHSS model only)



CONVECTION WALL OVENS



Exclusive self-clean, (2 full-extension, 1 regular), full-extension oven racks glide in and out smoothly on stainless steel ball bearings, and are designed to be left in the oven during the self-clean cycle.



Ten-pass dual broil element evenly browns dishes of all types and sizes.



True European Convection with Direct Air channels heated air from the top of the oven and circulates it around food on all sides for perfectly uniform baking and roasting.



Backlit electronic control knobs and bright LCD display are as elegant as they are ergonomic.

WALL OVENS



ELECTRONIC CONVECTION WALL OVENS

European



ZET9550SHSS 30" stainless steel convection double oven, 5.0 cu. ft. capacity (each oven)



ZET9050SHSS 30" stainless steel convection single oven, 5.0 cu. ft. capacity



ZEK7500SHSS 27" stainless steel convection double oven, 4.3 cu. ft. capacity (each oven)



ZEK7000SHSS 27" stainless steel convection single oven, 4.3 cu. ft. capacity

Glass touch controls allow you to adjust oven settings with little effort.

True European Convection with Direct Air channels heated air from the top of the oven and circulates it around food on all sides for perfectly uniform baking and roasting. (ZET models only)


Ten-pass bake element covers more surface area for more even baking results. (Eight-pass on ZEK models)

Theatre-style halogen oven lighting located on both sides of the oven to enhance visibility and provide a clear view of food, regardless of rack position.

WiFi Connect allows you to control oven functions from anywhere inside or even outside your home, using your smartphone or other web-enabled mobile device.

Self-clean, heavy-duty roller racks glide open smoothly to simplify loading and unloading.

Complete features and specifications on pg. 175.

 Certified Sabbath mode—all Monogram® wall ovens



DISCOVER THE JOYS OF SPEEDCOOKING.

Imagine the luxury of your favorite foods prepared to delicious perfection in minutes, at the push of a button. That's the power of an award-winning Advantium® oven, which combines four different ovens in one: Speedcook, true European convection, sensor microwave and warming. It saves you considerable time cooking, so you can savor more time living. Monogram® sensor microwave ovens in an array of designs add to the possibilities for your cooking and kitchen space.







WALL OVENS WITH ADVANTIUM® 240 SPEEDCOOK TECHNOLOGY

Oven-quality results two to eight times faster than a conventional oven, with no preheating.

European



ZSC2201JSS Stainless steel built-in oven with Advantium Speedcook technology

Professional



ZSC2202JSS Stainless steel built-in oven with Advantium Speedcook technology

Award-winning Advantium® Speedcook technology harnesses high-intensity halogen light to bake, broil, brown, roast, warm and even grill food—two to eight times faster than a conventional oven, with no preheating.

Flexible installation means the Advantium oven can go wherever it's needed most—over a Monogram warming drawer, as a complement to a Monogram single convection oven, or by itself as its own speedcooking center.

Complete features and specifications on pg. 176.





WALL OVENS WITH ADVANTIUM® 120 SPEEDCOOK TECHNOLOGY Oven-quality results two to four times faster than a conventional oven, with no preheating.

European



ZSC1201JSS 30" stainless steel built-in oven with Advantium 120 Speedcook technology

Professional



ZSC1202JSS 30" stainless steel built-in oven with Advantium 120 Speedcook technology

European



ZSC1001JSS 27" stainless steel built-in oven with Advantium 120 Speedcook technology



Ideal for islands and peninsulas, 30" models are designed for convenient installation under a counter.

Award-winning Advantium Speedcook technology uses a halogen-light system to deliver delicious results up to four times faster than a conventional oven, and no preheating is required.

Flexible installation allows the Advantium 120 oven to be placed over a convection wall oven and a warming drawer, or the oven can stand by itself as its own speedcooking center. Depending on your kitchen space, these ovens can be installed in a wall cabinet or under a counter.

Complete features and specifications on pg. 176.



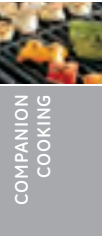


Optional storage drawer for European models keeps baking and cooking trays within easy reach.

Speedcook technology combines high-intensity halogen light with ceramic and radiant heating elements to rapidly cook the outside of foods, sealing in natural juices. At the same time, microwave energy works to evenly cook the inside. No preheating required.



Easy-to-use controls add cooking convenience. The round dial smoothly turns in both directions, making it easy to select from more than 175 preprogrammed recipes. Demo and Help programs guide you through the simple process of choosing a programmed recipe or customizing your own.



Spacious interior with 1.7-cu.-ft. cavity and 16" turntable easily accommodates roasts or 9" x 13" casserole dishes, and removable rack allows for multi-level convection baking.



Four powerful ovens in one—Speedcook, true European convection, sensor microwave and warming—offer the ultimate in cooking speed and versatility.





ABOVE-THE-COOKTOP OVENS WITH ADVANTIUM® 120 SPEEDCOOK TECHNOLOGY

Oven-quality results two to four times faster than a conventional oven, with no preheating.

European



ZSA1201FSS Stainless steel built-in oven with Advantium 120 Speedcook technology



When the rack is removed, the oven can easily accommodate a whole chicken or roast. A large turntable allows even browning.

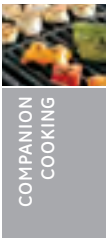
Professional



ZSA1202JSS Stainless steel built-in oven with Advantium 120 Speedcook technology

- Speedcook technology** uses halogen light to cook foods to delicious perfection with no preheating required.
- Four powerful ovens in one**—Speedcook, true European, convection, sensor microwave and warming/proofing—offer the ultimate in cooking speed and versatility.
- Easy-to-use controls** make it easy to select from more than 175 preprogrammed recipes.
- Spacious interior** with 13.6" turntable and two full-width oven racks easily accommodates a roast or three 8-1/2" x 11" casserole dishes.
- Four-speed, 300-CFM venting** system efficiently clears away smoke and steam from the cooktop.
- Convenient task lighting** provides three levels of illumination to suit your needs.
- Flexible above-the-cooktop configuration** makes the most of your kitchen space.

Complete features and specifications on pg. 176.





Optional hanging kit allows you to mount the oven under a cabinet, so you can save counter space.
ZEM115 model

MICROWAVE OVENS WITH SENSOR COOKING



ZEM115SJSS Stainless steel countertop microwave oven 1.1-cu.-ft. cavity, 800 watts



ZEB1226SHSS Stainless steel microwave oven 2.2-cu.-ft. cavity, 1100 watts

Sophisticated styling with electronic touch controls and large viewing window makes a sleek, modern statement.

Sensor cooking uses advanced electronics to monitor the level of steam released by food and automatically adjusts cooking time to deliver optimal results.

Flexible installation gives you options beyond counter placement. A built-in kit allows cabinet or wall installation (both models), and a hanging kit allows you to mount the oven under a cabinet (ZEM115).



COMPANION
COOKING



Custom panel kit allows the warming drawer to accept a 3/4" cabinet-compatible panel that blends into your kitchen. The panel and complementary handle must be ordered from your cabinetmaker.

WARMING DRAWERS



ZW9000SJSS 30" stainless steel warming drawer
ZJ7000SJSS 27" stainless steel warming drawer



ZXD9030P stainless steel professional panel kit fits 30" models

Sophisticated styling with hidden controls offers a look of understated elegance. The built-in drawers can be personalized with a custom, cabinet-compatible panel and handle. For 30" models, a professional panel is now available.

Temperature settings ranging from "proof" (approximately 75°F) to "high" (approximately 230°F) make the Monogram warming drawer as essential to cooking and entertaining as good food and friends.

Humidity control allows you to keep food crisp or maintain moisture, and can be easily adjusted by opening or closing the warming drawer vent.

Half rack distributes heat evenly, and it provides 50% more surface area by creating a second level for stacking plates and food.

Installation versatility allows warming drawers to be installed almost anywhere. All 30" and 27" models are UL-listed for installation under Monogram wall ovens and cooktops.

Complete features and specifications on pg. 177.



SET THE STAGE FOR INSPIRED COOKING

Monogram® gas rangetops and cooktops deliver exceptional responsiveness and flexibility with a full spectrum of settings on all dual-flame, stacked burners. Whether you need intense power for stir-frying vegetables or a low temperature for thickening a delicate sauce, Monogram has the precise heat to serve your culinary purpose.







PROFESSIONAL GAS RANGETOPS



ZGU486NDPSS (natural gas)
48" rangetop with six gas burners and a griddle



ZGU364NDPSS (natural gas)
36" rangetop with four gas burners and a griddle




ZGU366NPSS (natural gas)
36" rangetop with six gas burners



ZXRILL – Grill accessory available.

Complete features and specifications on pg. 178.
For guidelines on pairing hoods with cooking equipment, refer to pg. 184.

 Certified Sabbath—all Monogram® professional rangetops



Professional appearance features high-quality stainless steel with smoothly finished edges and large electronic control knobs.

Sealed, dual-flame stacked burners provide complete low-simmer-to-rapid-boil flexibility (140°F simmer to 18,000 BTUs*). The burners are sealed to the recessed cooktop for easy cleaning.

*Natural gas



Reversible burner grates are flat on one side and uniquely contoured on the other to accommodate various-size woks.



Stainless steel and aluminum-clad griddle offers 18,000 BTUs* of power, allowing fast and consistent heating across the entire cooking surface.

*Natural gas



STAINLESS STEEL GAS COOKTOPS



ZGU385NSMSS (natural gas)
36" stainless steel gas cooktop with 62,000 BTUs* of total cooking power.
Can be converted to liquid propane, conversion kit included.



ZGU384NSMSS (natural gas)
30" stainless steel gas cooktop with 50,000 BTUs* of total cooking power.
Can be converted to liquid propane, conversion kit included.

Sophisticated design makes a bold statement with a stainless steel surface that's angled and hand-finished to perfection.

Silent, Precise Simmer flame delivers a consistent 140°F temperature, without cycling on and off. No simmer plate required.

Instant ignition system ensures a continuous flame and reignites automatically if accidentally extinguished.

*Natural gas

*Complete features and specifications on pg. 179.
For guidelines on pairing hoods with cooking equipment, refer to pg. 184.*



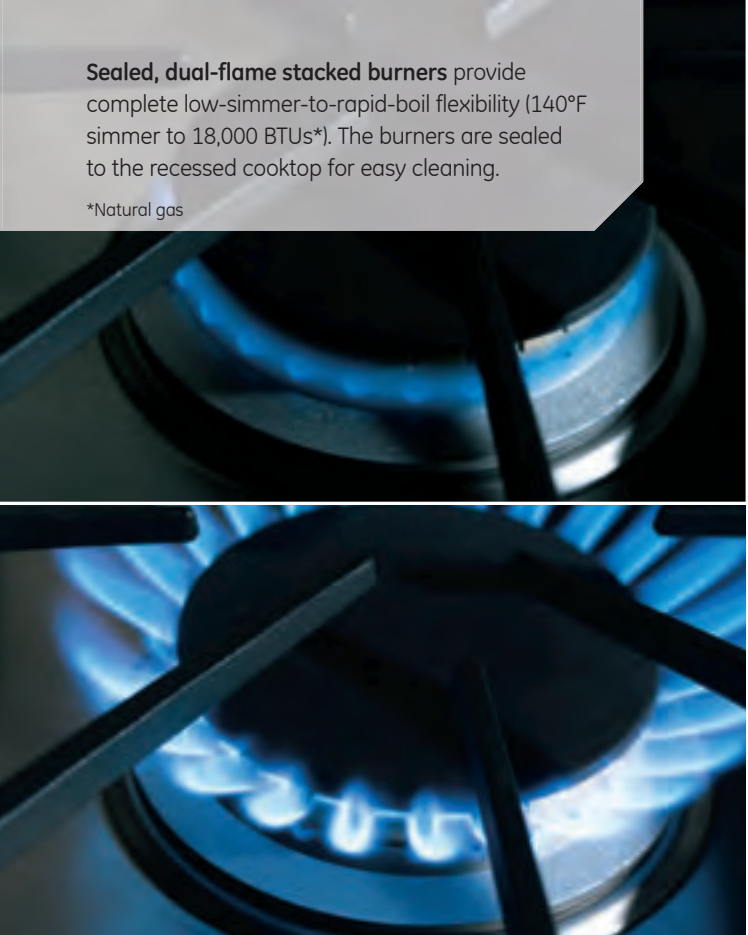
GAS COOKTOPS



Hand-finished, stainless steel knob controls rotate with smooth precision. A red indicator light in each knob makes it easy to view and select heat settings.

Sealed, dual-flame stacked burners provide complete low-simmer-to-rapid-boil flexibility (140°F simmer to 18,000 BTUs*). The burners are sealed to the recessed cooktop for easy cleaning.

*Natural gas



Interlocking, continuous grates create a steady surface for cookware, and are integrated into the cooktop for a clean, finished appearance.

High-output cooking power is offered by an 18,000-BTU* burner that delivers intense heat ideal for searing and boiling.

*Natural gas





SAVOR PURE ARTISTRY AND POWER

Culinary artistry finds perfect expression in the Monogram® cooktop collection. For stunning evidence, look to our induction cooktops, which captivate with magnetic presence and performance. Digital electronic models with rapid Hi/Lo elements also have powerful appeal.







INDUCTION COOKTOPS



ZHU36RSJSS 36" induction cooktop



ZHU30RSJSS 30" induction cooktop

Precision cooking allows you to achieve restaurant-quality results with an optional probe that wirelessly controls the temperature of your food. Ideal for Sous Vide, slow cooking, making candy or for any other cooking that requires precise control of temperature over time.

Multi-element timer allows you to manage up to five pans at once with individual timers for each element.

Custom settings allow you to personalize cooktop settings to fit your cooking style.

Pan sensors automatically heat elements to the size of your pan and shut off when no pan is present.

*Complete features and specifications on pg. 180.
For guidelines on pairing hoods with cooking equipment, refer to pg. 184.*





Five induction cooking elements deliver rapid, precise heating with a cool-to-the-touch surface that's easy to clean.



Glide touch controls allow you to precisely raise or lower heat in an instant with one easy swipe.



Melt setting gently melts delicate foods without burning or scorching



Sync Burners allow you to control two 7" elements simultaneously to evenly heat large cookware or the included griddle. **Stainless steel clad aluminum griddle** offers a lightweight design that's tailored to fit Monogram® Sync Burners and help you achieve even cooking results.



11" 3700W induction element rapidly boils water with our most powerful induction technology.

Five radiant cooking elements cook foods quickly and evenly on a sleek, glass surface.



ELECTRIC RADIANT COOKTOPS



ZEU36RSFSS 36" black electric radiant cooktop with stainless steel trim



ZEU30RSFSS 30" black electric radiant cooktop with stainless steel trim

- 12"/9"/6" 3600W Power Boil element** combines three elements in one to accommodate different pan sizes and deliver rapid, powerful heat.
- Multi-element timer** allows you to manage up to five pans at once with individual timers for each element.
- Stainless steel clad aluminum griddle** offers a lightweight design that's tailored to fit Monogram® Sync Burners and help you achieve even cooking results.
- Keep warm setting** uses our lowest heat setting to keep just-cooked foods warm, and can also boil water in minutes.

Sync Burners allow you to control two 7" elements simultaneously to evenly heat large cookware or the included griddle.



Glide touch controls allow you to precisely raise or lower heat in an instant with one easy swipe.

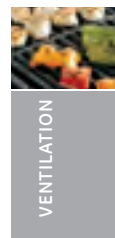


Complete features and specifications on pg. 186.
For guidelines on pairing hoods with cooking equipment, refer to pg. 190.



HIGH STYLE MEETS HIGH POWER

Crafted by Italian artisans, each Monogram® ventilation hood is a masterpiece of handcrafted artistry, fashioned from up to 18 pieces of stainless steel all made to look like one seamless design. From sculptural professional styles to streamlined European options, all models provide the power necessary to capture the smoke and steam produced by high-performance cooking equipment.



VENTILATION





CHIMNEY HOODS



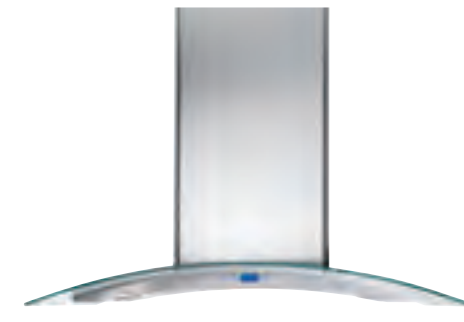
ZV1050SFSS 42" island stainless steel dual-blower hood, 1040 CFM (finished on all sides)



ZV950SDSS 36" wall-mounted stainless steel dual-blower hood, 690 CFM



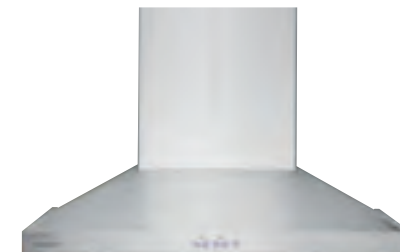
ZV850SPSS 36" island stainless steel hood, 350 CFM (finished on all sides)
ZV750SPSS 36" wall-mounted stainless steel hood, 350 CFM



ZV925SLSS 36" island glass canopy hood, 490 CFM
ZV900SLSS 36" wall-mounted glass canopy hood, 490 CFM



ZV800SJSS 36" wall-mounted stainless steel hood with retractable glass canopy, 460 CFM (under-cabinet or stand-alone installation)



ZV830SMSS 30" wall-mounted stainless steel hood, 420 CFM

Complete features and specifications on pg. 181.
For guidelines on pairing hoods with cooking equipment, refer to pg. 184.





Variable-speed blower provides the power necessary to capture smoke and fumes produced by high-performance cooking equipment.

CHIMNEY HOODS



Stainless steel design with graceful contours and lines creates a distinct appearance that enhances any kitchen.



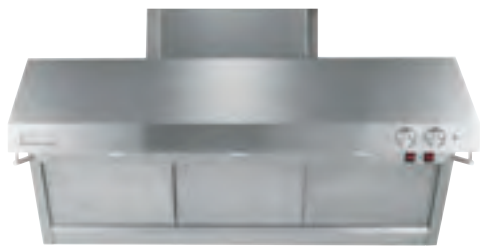
Halogen lights offer varying levels of intensity, from accent to ambient, to meet different needs.



Removable stainless steel filters can be easily detached from the hood for safe cleaning in your dishwasher.



PROFESSIONAL WALL-MOUNTED HOODS



ZV48RSFSS 48" professional restaurant-style hood, 1090 CFM
ZV36RSFSS 36" professional restaurant-style hood, 620 CFM

These models include stainless steel backsplash and warming shelf.
 Shown with optional duct cover.



ZV48TSFSS 48" professional tapered-sided hood, 1090 CFM
ZV36TSFSS 36" professional tapered-sided hood, 620 CFM

Shown with optional duct cover.



ZV48SSFSS 48" professional straight-sided hood, 1090 CFM
ZV36SSFSS 36" professional straight-sided hood, 620 CFM
ZV30SSFSS 30" professional straight-sided hood, 620 CFM

Shown with optional duct cover.



ZV30HSRSS 30" wall-mounted/undercabinet hood, 530 CFM

PROFESSIONAL ISLAND HOODS



ZV54ISHSS 54" professional island hood, 1090 CFM

Complete features and specifications on pg. 182.
 For guidelines on pairing hoods with cooking equipment, refer to pg. 184.





Halogen task lighting illuminates the cooking surface below and can be adjusted to complement the dining occasion.

Powerful ventilation helps keep your kitchen free of fumes and excess heat.

PROFESSIONAL HOODS

Undercabinet installation is made possible by the clean-lined design of the 30" wall-mounted hood (ZV30HSRSS), which can fit beneath a soffit or cabinet for a finished look with no exposed ductwork.



Stainless steel design offers a smooth and polished appearance, with almost no evidence of seams or screws.



Infrared warming lamps generate the heat necessary to keep baked goods at ready-to-serve temperatures.

VENTILATION



CUSTOM HOOD INSERTS



ZVC48LSS 48" stainless steel custom hood insert, 1140 CFM
ZVC42LSS 42" stainless steel custom hood insert, 1140 CFM



ZVC36LSS 36" stainless steel custom hood insert, 640 CFM
ZVC30LSS 30" stainless steel custom hood insert, 640 CFM

TELESCOPIC DOWNDRAFT VENT



ZVB36STSS 36" stainless steel telescopic downdraft vent, 390 CFM
ZVB30STSS 30" stainless steel telescopic downdraft vent, 390 CFM



Powerful ventilation system uses a stainless steel vent that “telescopes” 8-1/2 inches above the cooktop when you cook, then retracts nearly flush to the surface. A variable-speed fan blower exhausts the air at a rate of 390 CFM.

Complete features and specifications on pg. 183.
For guidelines on pairing hoods with cooking equipment, refer to pg. 184.





Single- and dual-blower ventilation with variable-speed fan exhausts air at a rate of 640 and 1140 cubic feet per minute, making the inserts compatible with high-performance cooking appliances.

CUSTOM HOOD INSERTS

Patented installation process allows an easy and secure connection with the ventilation duct from within the unit, without any modification to the exterior canopy.



Control panel with remote-mount option provides additional design flexibility. At the time of installation, the panel can be detached from the insert for mounting on a wall, countertop or other location. When positioned onboard, the panel is angled downward to allow easy adjustment of ventilation and light settings.



Complete with blower, liner and filters, so there's no need to order any additional components or accessory kits. Stainless steel mesh filters fit securely and lift out easily for safe cleaning in your dishwasher.

Halogen lighting provides four levels of clean, brilliant illumination to suit any cooking task.



CREATE YOUR OWN GREAT OUTDOORS

The same exceptional quality and design that distinguish Monogram® cooking appliances for the kitchen also characterize our collection of professional outdoor grills. Carefully constructed to exacting standards and built to stand out in style and in features, a Monogram grill brings luxurious possibilities to your patio and your everyday meals.







BUILT-IN GRILLS



ZGG420NBPSS (natural gas)
42" built-in grill with two grill burners,
one sear burner and one rotisserie burner



ZGG300NBPSS (natural gas)
30" built-in grill with two grill burners
and one rotisserie burner

OUTDOOR ACCESSORIES



ZX27AD
Built-in double doors

Stainless steel double-door option provides a customized built-in look and gives you convenient access to barbecue tools and accessories.



ZDOD240HSS
Outdoor/Indoor refrigerator

Outdoor/indoor refrigerator is designed to keep contents cool and crisp, no matter what the temperature outside. When the top panel is removed, the free-standing stainless steel unit can be easily installed in an enclosure.

Complete features and specifications on pgs. 185.

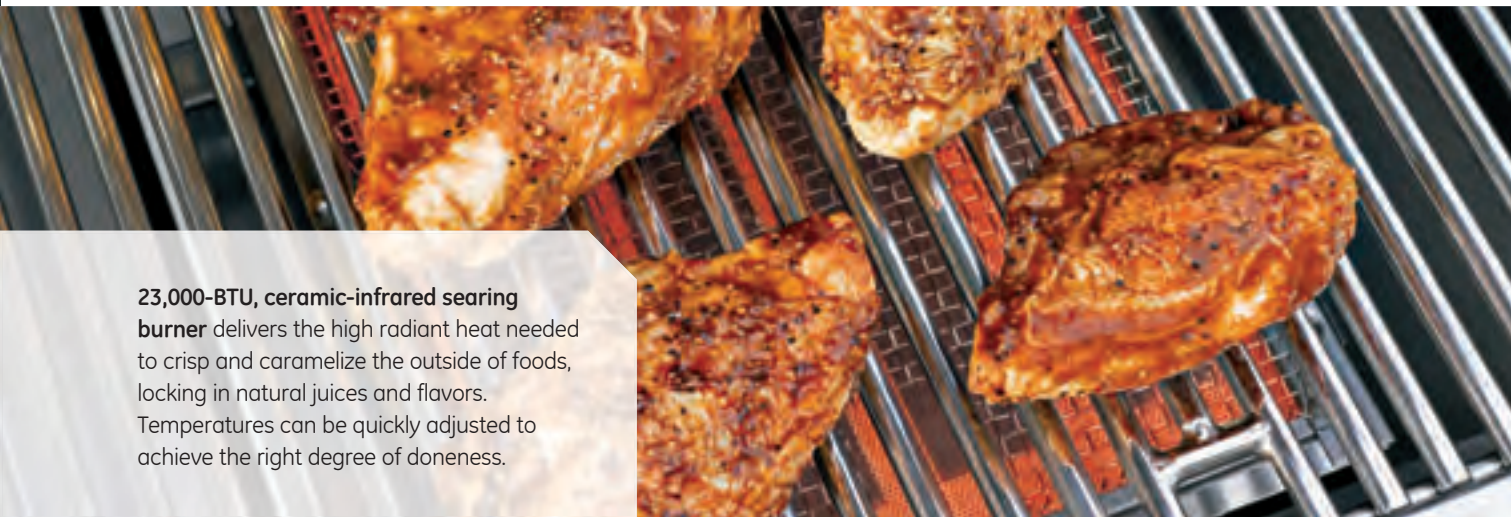


Integrated illumination includes red LED lights above knob controls, along with interior halogen lighting for nighttime grilling.

BUILT-IN AND FREE-STANDING GRILLS



Ceramic-infrared rotisserie burner allows you to slow-roast lamb, pork and other meats to succulent perfection. Stainless steel spit rod and claws included.



23,000-BTU, ceramic-infrared searing burner delivers the high radiant heat needed to crisp and caramelize the outside of foods, locking in natural juices and flavors. Temperatures can be quickly adjusted to achieve the right degree of doneness.



25,000 BTU, stainless steel burners offer precise control across a wide spectrum of temperature settings while Gourmet Radiant™ trays ensure even heat distribution and reduce flare-ups.



Stainless steel, drop-in smoker box infuses foods with flavorful aromas, such as mesquite or hickory.



REFRIGERATION



Craftsmanship is the hallmark of the Monogram® collection, and this is perfectly evidenced in the exquisite quality and artistry of Monogram refrigerators. Choose from built-in and free-standing configurations, in a wide array of styles and sizes. Customizable climate-control technologies and storage compartments give you even more possibilities.





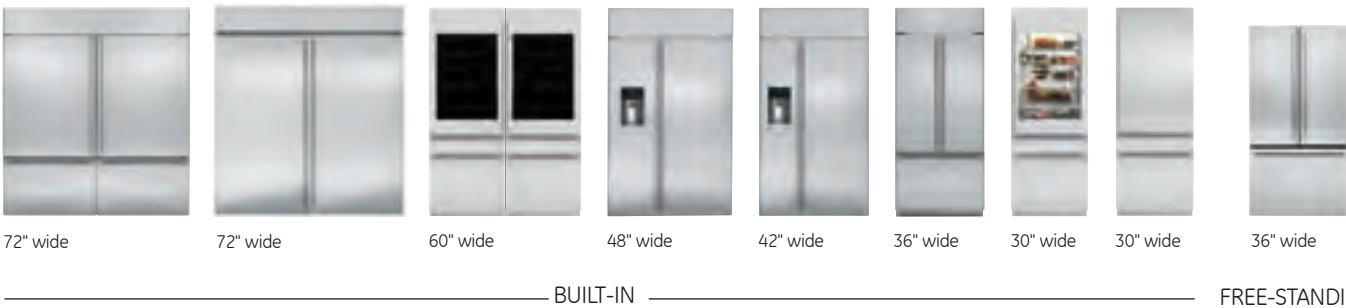
REFRIGERATION



A WORLD OF TASTEFUL OPTIONS

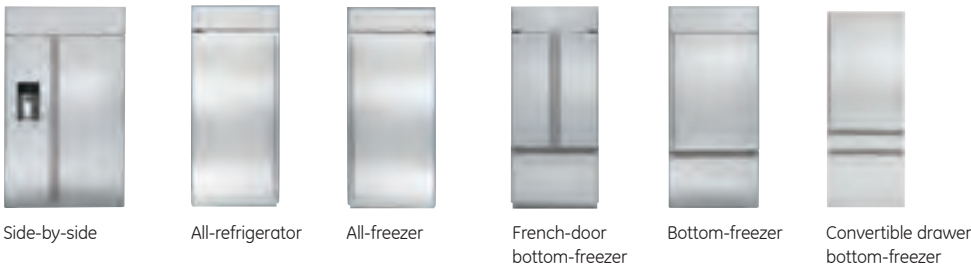
OPTION 1—SIZE

Choose the refrigerator that best suits your space. Refrigerator widths range from 30" to 72" for built-in installations. Free-standing models have a width of 36". For maximum design impact and storage flexibility, consider two 36" built-in units installed together, using a unified grille kit. Or, place a Monogram® built-in all-refrigerator alongside an all-freezer.



OPTION 2—CONFIGURATION

Consider how you use your refrigerator. If you prefer a dispenser model, choose a Monogram side-by-side refrigerator. Or, if you're looking for a sleek single-door design, consider the Monogram all-refrigerator and all-freezer. If your kitchen has a fresh-food focus, a Monogram bottom-freezer or French-door refrigerator is a fitting choice.



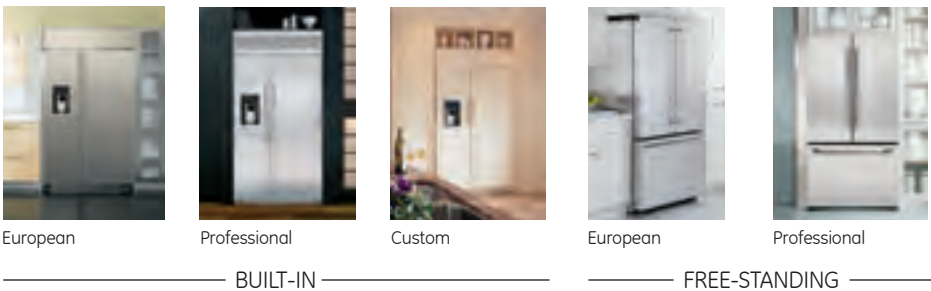
OPTION 3—STYLE

European. Heavy-gauge stainless steel extends completely across the doors, wrapping beautifully around the edges. Long, slim tubular handles—a Monogram signature—enhance the overall look and feel.

Professional. The stainless exterior conveys both a sense of solidity and beauty with pro-style handles and louvered grille.

Custom. Personalization with cabinet-compatible panels sets the stage for a truly distinctive kitchen. Optional flush-inset installation offers an elegant and seamless appearance.

Styles and options may vary by model size and configuration.





PERSONALIZING YOUR KITCHEN WITH CUSTOM PANEL-READY APPLIANCES

Custom-panel appliances provide the perfect canvas for creative expression in the kitchen. When your kitchen plans include Monogram® custom-panel appliances—refrigerators, refrigeration modules, dishwashers and icemakers—you can follow your imagination wherever it takes you. Whether you wish to hide or highlight your appliances, complement or contrast cabinetry and other appliances, Monogram can make your kitchen look like *your kitchen*.

Here, a Monogram side-by-side refrigerator is reimagined with custom overlay panels photo-etched with a New York cityscape design. The full-length handles are from Monogram and are included with all built-in custom-panel refrigerators. Handles for fully integrated refrigerators and dishwashers must be ordered separately.

DESIGN OPTIONS



INTEGRATED

Monogram 30" refrigerators have a fully integrated design that offers a true flush fit with surrounding inset cabinetry, creating an elegant and seamless impression in the kitchen. Choose stainless European or professional-style cabinets from Monogram, or order panels and handles from your cabinetmaker.



FLUSH INSET

Built to match the exact depth of adjacent cabinets, flush inset design offers a smooth and streamlined appearance. This option is available for Monogram custom-panel built-in refrigerators, including side-by-side, bottom-freezer, all-freezer and all-refrigerator models.



3/4-INCH OVERLAY

For a frameless appearance, you can select custom overlay panels from your cabinetmaker. The panels slide into the trim on the Monogram built-in appliances. Standard handles are included for each door and drawer.



1/4-INCH FRAMED

Built-in custom appliances can also be customized with 1/4" panels from your cabinetmaker. The decorative panels slide into the factory-installed trim, and no additional kits are required. Standard handles are included for each door and drawer.





ENJOY REFRESHING POSSIBILITIES

For a polished look of refinement, the appeal of Monogram® refrigerators and freezers is unmistakable. Perfect examples are free-standing, French-door and side-by-side refrigerators, which are beautiful to behold from every angle. For maximum design impact and storage flexibility, consider two 30" fully integrated refrigerators, which offer a true flush fit with surrounding cabinetry. Or, place a 36" built-in all-refrigerator alongside an all-freezer for an abundance of space and possibility.







FULLY INTEGRATED 30" WIDE CUSTOMIZABLE REFRIGERATORS WITH CONVERTIBLE DRAWER

Custom



ZIC30GNHII
80" H custom panel



84" H custom panel



ZIK30GNHII
80" H custom panel



84" H custom panel

Custom wood panels and handles can be ordered from your cabinetmaker.

European



ZIC30GNHII
80" H European panel
kit ZKST300N



84" H European panel
kit ZKST304NRH



ZIK30GNHII
80" H European panel
kit ZKGT300N



84" H European panel
kit ZKT304NRH

Professional



ZIC30GNHII
80" H Professional
panel kit ZKSP300N



84" H Professional
panel kit ZKSP304NRH



First HFC-free refrigerator in the U.S.
to use an R600a refrigerant, which has
a lower global warming impact than
ozone-depleting hydrofluorocarbon
(HFC) refrigerants commonly used in
household refrigerators.

For kosher kitchens, Monogram fully
integrated 30" refrigerator controls can
be set to operate in Sabbath mode.





Convertible lower drawer with independent temperature controls can be used to store fresh food, frozen foods, wine or beverages.

REFRIGERATE
34° to 46° F



FREEZE
-6° to 6° F



WINE
40° to 55° F



A freezer drawer with an **electronic icemaker** features a removable ice bin and scoop, offering extra room for everyday freezer items, such as pints of ice cream.



Dual-refrigeration system provides precise and customizable climate control with three independent temperature-management zones.



LED interior lighting enhances visibility and energy-efficiency. **Elegant adjustable glass shelves** make room for extra items.



Self-closing vegetable drawer has an innovative sliding mechanism that automatically seals the compartment shut. Two dividers can be adjusted left to right or removed completely to make room for such items as a 13" pizza or deli tray.

FULLY INTEGRATED 30" WIDE CUSTOMIZABLE REFRIGERATORS WITH CONVERTIBLE DRAWER



BUILT-IN SIDE-BY-SIDE REFRIGERATORS

Custom



ZIS480NH
48"-wide, 29.9-cu.-ft.
refrigerator without
dispenser



ZISB480DH
48"-wide, 30.1-cu.-ft.
refrigerator with
black dispenser



ZIS420NH
42"-wide, 25.4-cu.-ft.
refrigerator without
dispenser



ZISB420DH
42"-wide, 25.5-cu.-ft.
refrigerator with
black dispenser



ZISB360DH
36"-wide, 21.1-cu.-ft.
refrigerator with
black dispenser

Custom wood panels and handles can be ordered from your cabinetmaker.

European



ZISS480DHSS
48"-wide stainless steel,
30.1-cu.-ft. refrigerator
with dispenser



ZISS480NHSS
48"-wide stainless steel,
29.9-cu.-ft. refrigerator
without dispenser



ZISS420DHSS
42"-wide stainless steel,
25.5-cu.-ft. refrigerator
with dispenser



ZISS420NHSS
42"-wide stainless steel,
25.4-cu.-ft. refrigerator
without dispenser



ZISS360DHSS
36"-wide stainless steel,
21.1-cu.-ft. refrigerator
with dispenser

Professional



ZISP480DHSS
48"-wide stainless steel, 30.1-cu.-ft.
refrigerator with dispenser



ZISP420DHSS
42"-wide stainless steel, 25.5-cu.-ft.
refrigerator with dispenser

Complete features and specifications on pg. 187.

For kosher kitchens, an optional kit allows Monogram side-by-side refrigerators to operate in Sabbath mode.

Direct airflow allows independent cooling of the generously sized fresh-food and freezer compartments.



BUILT-IN SIDE-BY-SIDE REFRIGERATORS



Climate-control drawer chills beverages in minutes, thaws meats in hours and helps preserve a variety of fresh foods.



Drop-down shelf provides additional space for a casserole dish or pizza box.



Halogen light columns extend the full length of the interior cabinet, providing illumination to every shelf and drawer.



Dispenser with proximity sensor lights up as you approach and automatically switches off when you walk away.



BUILT-IN FRENCH-DOOR BOTTOM-FREEZER REFRIGERATORS

Custom



ZIP360NH
36"-wide, 20.5-cu.ft. refrigerator
Custom wood panels and handles can be ordered from your cabinetmaker,



Precision glass-front produce and deli drawers
feature full-extension, soft-close slides.

European



ZIPS360NH
36"-wide stainless steel,
20.5-cu.-ft. refrigerator

Professional



ZIPP360NH
36"-wide stainless steel,
20.5-cu.-ft. refrigerator

Complete features and specifications on pg. 188.

French-door design gives you wide-open access to every fresh food shelf and bin.



BUILT-IN FRENCH-DOOR BOTTOM-FREEZER REFRIGERATORS

Large, full-extension freezer drawer has storage bins that slide out independently of one another for easy loading.

Automatic icemaker conveniently located in the top freezer drawer gives you quick access to a ready supply of filtered ice.



Extra-deep glass door bins with riveted metal accents offer easy access to beverages and quick-grab items.



Upfront electronic controls with digital readout offer a range of precise temperature settings, all within easy reach.



BUILT-IN BOTTOM-FREEZER REFRIGERATORS

Custom



ZIC360NHLH
36"-wide, 20.6-cu.-ft. refrigerator
with left-hinged door



ZIC360NHRH
36"-wide, 20.6-cu.-ft. refrigerator
with right-hinged door

Custom wood panels and handles can be ordered from your cabinetmaker.

European



ZICS360NHLH
36"-wide, stainless steel 20.6-cu.-ft.
refrigerator with left-hinged door



ZICS360NHRH
36"-wide, stainless steel 20.6-cu.-ft.
refrigerator with right-hinged door

Professional



ZICP360NHLH
36"-wide, stainless steel 20.6-cu.-ft.
refrigerator with left-hinged door



ZICP360NHRH
36"-wide, stainless steel 20.6-cu.-ft.
refrigerator with right-hinged door

Complete features and specifications on pg. 188.

For kosher kitchens, an optional kit allows Monogram bottom-freezers to operate in Sabbath mode.



Large, full-extension freezer drawer has an automatic icemaker with GE water filtration, as well as storage bins that slide out independently of one another for easy loading and unloading.

Advanced temperature-management system with upfront electronic controls delivers cool, fresh air to every shelf and door bin.

Split and adjustable shelves allow convenient access to contents in the fresh-food compartment.

Adjustable, gallon-size door bins provide room for milk containers and two-liter bottles.

Humidity-controlled vegetable compartments and sealed snack pans help maximize food freshness.



BUILT-IN ALL-REFRIGERATORS AND ALL-FREEZERS

Custom



ZIF360NHLH
36"-wide, 21.5-cu.-ft. all-freezer
with left-hinged door



ZIR360NHRH
36"-wide, 21.5-cu.-ft. all-refrigerator
with right-hinged door

Custom wood panels and handles can be ordered from your cabinetmaker.

European



ZIFS360NHLH
36"-wide, stainless steel 21.5-cu.-ft.
all-freezer with left-hinged door



ZIRS360NHRH
36"-wide, stainless steel 21.5-cu.-ft.
all-refrigerator with right-hinged door

ZIFS360NHRH
36"-wide, stainless steel 21.5-cu.-ft.
all-freezer with right-hinged door

ZIRP360NHLH
36"-wide, stainless steel 21.5-cu.-ft.
all-refrigerator with left-hinged door

Professional



ZIFP360NHLH
36"-wide, stainless steel 21.5-cu.-ft.
all-freezer with left-hinged door



ZIRP360NHRH
36"-wide, stainless steel 21.5-cu.-ft.
all-refrigerator with right-hinged door

ZIFP360NHRH
36"-wide, stainless steel 21.5-cu.-ft.
all-freezer with right-hinged door

ZIRP360NHLH
36"-wide, stainless steel 21.5-cu.-ft.
all-refrigerator with left-hinged door

Complete features and specifications on pg. 189.



Enhanced temperature-management system with precise electronic controls and thermistors maintains ideal storage conditions for fresh and frozen foods.



Fresh-food drawers glide open smoothly, providing convenient access to contents. All drawers can be removed for easy cleaning.



Ice drawer in the freezer makes it easier for everyone in the family to stay refreshed throughout the day.



Slim digital control panel frees up space on the top shelf, making room for tall bottles and containers.



Versatile configuration allows models to be built into cabinetry, without the need for additional trim kits. Depending on your space and lifestyle needs, models can be installed individually or alongside one another.





FREE-STANDING FRENCH-DOOR/BOTTOM-FREEZER REFRIGERATORS

European



ZWE23ESHSS
36"-wide, stainless steel 23.1-cu.-ft.
counter-depth refrigerator

Professional



ZWE23PSHSS
36"-wide, stainless steel 23.1-cu.-ft.
counter-depth refrigerator

Complete features and specifications on pg. 189.

Advanced water filtration uses RPWF replacement filter—Removes trace pharmaceuticals from ice.



Drop-down tray allows for extra door storage when you need it and tucks away when you don't.



Quick Space Shelf functions as a normal full-sized shelf when needed and easily slides down for instant storage flexibility.



TwinChill™ evaporators for separate climates in the fresh food and freezer sections to help keep foods fresh.



Showcase LED lighting is positioned throughout the interior and under fresh food doors to spotlight foods inside the refrigerator and in the freezer.

Flexible storage gives you quick and easy access to contents. In the fresh food compartment, adjustable shelves and door bins make the most of interior space. Full-extension freezer baskets enhance storage convenience.



FREE-STANDING SIDE-BY-SIDE REFRIGERATOR



ZFSB25DXSS
36"-wide, 25.0-cu.-ft. counter-depth refrigerator with dispenser

- Complete stainless appearance** is smooth from edge to edge, with no exposed screws or rivets. The counter-depth design aligns nearly flush with surrounding cabinetry.
- Precise temperature management** is made possible by a dual-evaporator system with multi-shelf air tower, which helps maximize food freshness in both refrigerator and freezer compartments.
- Climate-control drawer** has precise controls that allow you to express-chill beverages, express-thaw meats and select specific temperatures for perishable foods.
- Extra-tall dispenser** accommodates glassware of all sizes, from pitchers to tumblers.
- GE filtration system** delivers clean, great-tasting water and ice through the dispenser.

Complete features and specifications on pg. 190.

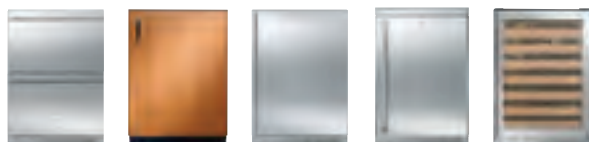


REFRIGERATION



SMALL IS BEAUTIFUL AND VERSATILE

Compact and amazingly versatile, Monogram® undercounter refrigerators offer ample room for storage of everything from beverages to party trays, yet fit the same opening as a standard dishwasher. Most models give you the option of a stainless steel or custom wood-paneled appearance. Ice makers are also available, adding to the entertaining possibilities for your home.



REFRIGERATION
MODULES





DOUBLE-DRAWER REFRIGERATOR



ZIDS240HSS
Stainless steel



ZIDI240HII
Custom panel



Complete features and specifications on pg. 190.



Flush installation is made possible by a built-in configuration that allows seamless integration with surrounding cabinetry. Model ZIDI240HII accepts 3/4" panels and handles for a personalized look.



Full-extension upper and lower drawers slide out independently of one another for easy loading and unloading.



Cabinet-compatible panels outside and brilliant LED lighting inside add to the refrigerator's versatile appeal.



Storage convenience in the top drawer is maximized with adjustable dividers and a fold-down shelf. This section can hold up to 72 twelve-ounce cans. The removable bottom-drawer bin allows room for whole melons, large turkeys or eight two-liter bottles.



Brilliant, full-width LED lighting in both drawers puts contents into clear view.

DOUBLE-DRAWER REFRIGERATOR



Retractable QuickSpace™ shelf slides back and out of the way when you need to make room for oversized containers.



Clear Lexan® crisper on full-extension slides keeps fresh fruits and vegetables close at hand.

FRESH-FOOD REFRIGERATOR



ZIFS240HSS Stainless steel, right-hinged door



ZIFI240HII Custom panel, right-hinged door



Digital touch controls offer a range of temperatures for precise chilling of a variety of fresh foods and beverages, and an LED display allows easy viewing of temperatures.

Storage convenience is offered with removable, spillproof glass shelves, along with a QuickSpace™ shelf and clear Lexan crisper on full-extension slides.

Flexible configuration allows the refrigerator to stand beautifully on its own, or it may be built into cabinetry. Model ZIFI240HII accepts a custom 3/4" panel and handle for a personalized look.

Full-width LED lighting puts contents into clear view.

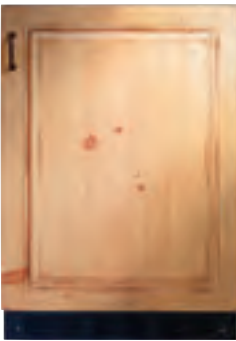
Complete features and specifications on pg. 190.



BAR REFRIGERATOR WITH ICEMAKER



ZIBS240HSS Stainless steel



ZIBI240HII Custom panel



Digital touch controls allow a range of temperature settings for different cooling needs, and an LED display makes settings clearly visible.

Storage convenience is delivered by a full-extension beverage shelf that holds up to five wine bottles or 10 twelve-ounce cans. Spillproof glass shelves provide ample space for storage of fresh foods and beverages.

Freestanding configuration allows the refrigerator to stand beautifully on its own, or it may be built into cabinetry. Model ZIBI240HII accepts a custom 3/4" panel and handle for a personalized look.

Full-width LED lighting puts contents into clear view.



Automatic icemaker with pullout bin on full-extension slides holds up to eight pounds of ice.

Complete features and specifications on pg. 191.



Sturdy, professional-grade stainless steel exterior stands up to the most demanding environmental conditions.



OUTDOOR/INDOOR REFRIGERATOR



ZDOD240HSS Stainless steel, right-hinged door

Digital touch controls maintain a proper climate for food preservation when outdoor temperatures range between 45°F and 120°F.

Adjustable shelves and beverage racks allow flexible storage of fresh foods, drinks and condiments.

Key-entry lock helps prevent unwanted opening of the door when it's not in use.

Flexible installation allows a wide range of installation possibilities outside and inside your home. The refrigerator is finished on all sides in stainless steel, and the top panel can be removed to allow built-in installation.

Full-width LED lighting puts contents into clear view.



Retractable QuickSpace™ shelf and full-extension beverage racks set the stage for carefree alfresco dining. A key-entry door lock limits access to contents.



Complete features and specifications on pg. 191.



Custom-panel option lets you coordinate models with cabinetry for a look of elegant understatement.



Full-extension racks have fronts made of solid heart-of-cherry, which can be finished to complement cabinetry. And **precise digital controls** are discreetly concealed behind the door, where they can be easily adjusted.

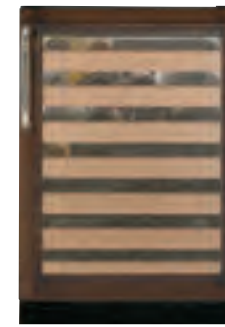


Full-extension sliding racks store up to 57 wine bottles and keep them close at hand.

WINE RESERVES



ZDWR240HBS Wine reserve with digital controls



ZDWI240HII Custom panel wine reserve with digital controls

Digital touch controls allow you to select precise temperature settings, which are essential for proper wine storage.

Freestanding configuration allows the wine reserve to be built into cabinetry, and the door swing is easily reversed as needed.

Full-width LED lighting puts contents into clear view.

Complete features and specifications on pg. 192.



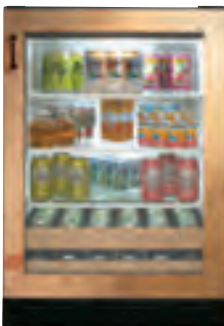
REFRIGERATION
MODULES



BEVERAGE CENTERS



ZDBR240HBS Beverage center with digital controls



ZDBI240HII Custom panel beverage center with digital controls

Digital touch controls provide precise temperature settings for cooling of all types of beverages.

Storage convenience is delivered with three removable glass shelves, including a QuickSpace™ shelf. Two full-extension wine racks hold up to 10 bottles, as well as 12-ounce cans, quart-size bottles and two-liter plastic containers.

Freestanding configuration allows the beverage center to be built into cabinetry, and the door swing is easily reversed as needed.

Full-width LED lighting puts contents into clear view.

Complete features and specifications on pg. 192.



BEVERAGE CENTERS



Removable spillproof glass shelves help contain spills for ease of cleaning.



Spacious interior with removable glass shelves and full-extension wine racks accommodates beverages of all types and sizes, and puts them all within easy reach.



Convenient 24" configuration is fully finished on all sides to allow installation virtually anywhere in the home.



QuickSpace™ shelf slides back and out of the way when you need to make room for oversized containers.



ICEMAKERS



ZDIS15SSHLH
15" stainless steel automatic
icemaker, left-hinged door

ZDIS15SSHRH
15" stainless steel automatic
icemaker, right-hinged door



ZDIC150ZBB
15" black automatic
icemaker

High production and large capacity make a Monogram® icemaker a versatile addition to any entertainment setting. Both models produce up to 50 pounds of clear ice per day and automatically shut off when the 25-pound-capacity bin is full.

Customizable 15" door accepts a 3/4" overlay panel to match surrounding cabinetry.* You can choose your own custom handle.

At large social gatherings, the Monogram icemaker is a perfect host, producing large volumes of ice on demand.

Water filter delivers clean, great-tasting ice and is easy to install and replace.

*Order ZIP75BB panel kit.



When the need arises for an ample supply of ice, a Monogram icemaker fits the bill beautifully. Electronic controls hidden behind the door allow for a clean, integrated appearance.

Complete features and specifications on pg. 192.



ICEMAKERS

CLEANING



Like exquisitely crafted flatware or pristine bone china, Monogram® dishwashers and compactors artfully demonstrate the beauty in utility. Whether it's a flush-inset dishwasher or custom-panel compactor, you'll have an appliance designed to create a clean impression in any setting.









DISCOVER THE ART OF CLEAN

The Monogram® dishwasher collection includes your choice of European, professional and custom styles. Whether you wish to hide or highlight the dishwasher, complement or contrast cabinetry and other appliances, you'll find a Monogram dishwasher that works wonderfully with your kitchen and daily living routine.





DISHWASHERS



ZDT870SSFSS Stainless steel dishwasher with 102 jets, LED interior lighting and 3rd rack, 39 dBA



ZDT870SPFSS Stainless steel dishwasher with 102 jets, LED interior lighting and 3rd rack, 39 dBA



ZDT870SIFII Stainless steel dishwasher with 102 jets, LED interior lighting and 3rd rack, 39 dBA



ZDT800SSFSS Stainless steel dishwasher with 102 jets, LED interior lighting, 42 dBA



ZDT800SPFSS Stainless steel dishwasher with 102 jets, LED interior lighting, 42 dBA



ZDT800SIFII Stainless steel dishwasher with 102 jets, LED interior lighting, 42 dBA



NSF Protocol for Sanitization and Cleaning Performance of Household Spray-Type Dishwashers (1997)

All full-size Monogram dishwashers are NSF-certified to reduce 99.999% of bacteria.



Complete features and specifications on pg. 193.



GE's most advanced wash system has 102 cleaning jets to ensure that even closely stacked items get thoroughly washed and rinsed. **Side-mounted jets** produce a continual cascade of fresh water, while dedicated silverware jets focus cleaning action on utensils to give them a perfect polish and shine. A **reverse-direction wash arm** enhances cleaning performance, allowing spray jets to hit items from every angle.



LED interior lighting illuminates the entire interior, leaving no question as to whether or not dishes have been cleaned.



Exclusive bottle-wash feature uses dedicated jets to direct water deep inside tall containers, giving you the assurance all your dishes are completely clean.



Full-extension, smooth-glide, adjustable third rack functions as a utensil drawer for cleaning an entire flatware collection, along with carving knives, soup ladles, tongs and other cooking/serving tools. *ZDT870 models*



Ultraquiet 39 dBA performance with LED status indicator on the door lets you know if the dishwasher is washing, drying or clean. *ZDT870 models*

All Monogram dishwashers meet **ENERGY STAR®** guidelines for energy efficiency and water conservation.





18" DISHWASHER



ZBD1870NSS
Stainless steel dishwasher



ZBD1850NII
Dishwasher with custom wood panel and handle (which can be ordered from your cabinetmaker)

Flush-mount configuration allows the dishwasher to align smoothly with surrounding cabinetry.

Hidden, integrated electronic controls allow easy activation of wash cycles, including heavy wash, normal wash, light wash, china and rinse only.

Pearlescent gray, nylon-coated racks provide plenty of space and loading flexibility. The lower rack includes a StemSafe™ feature for odd-shaped items and delicate stemware.

Five-level wash system provides effective, yet quiet, cleaning power.



Complete features and specifications on pg. 193.



COMPACTORS



ZCGP150RII
15" custom panel compactor



ZCGS150RSS
15" stainless steel compactor

Fully integrated, 15-inch-wide design with hidden controls installs flush with surrounding cabinetry. For a sophisticated stainless steel appearance, order the ZCGS150RSS compactor. Model ZCGP150RII accommodates a 3/4" overlay panel and a custom handle.

Powerful compacting system with large, 1.4-cu.-ft. capacity exerts up to 5,000 pounds of force. It reduces trash volume by 75 percent, allowing easy transport and disposal.

When the party's over, a Monogram® compactor helps make cleaning tasks simple and manageable.



For a kitchen or an entertaining area, the Monogram compactor provides a simple and clean way to consolidate paper waste.

Complete features and specifications on pg. 192.



48" professional ranges

	ZDP484NGPSS	ZDP484NRPSS	ZDP486NDPSS ZGP486NDRSS/ZGP486LDRSS
Description	48" range with 4 burners, grill and griddle	48" range with 6 burners and grill	48" range with 6 burners and griddle
Rangetop (all models):			
Adjustable simmer down to 140° F	all burners	all burners	all burners
Electronic ignition with automatic reignition	all burners	all burners	all burners
Reversible cast-iron, porcelain-enameled wok grates	all burners	all burners	all burners
Seamless porcelain burner pans	•	•	•
Bamboo cutting board	•		•
Reversible cast-iron grill grate	•	•	
Dual-fuel (ZDP models):			
Dual-flame stacked sealed burners	(4) 18,000 BTU	(6) 18,000 BTU	(6) 18,000 BTU
Stainless steel and aluminum clad, thermostatically controlled griddle (200–450°F)	18,000 BTU		18,000 BTU
Dual-fuel adjustable-output ceramic IR grill	15,000 BTU	15,000 BTU	
Dual-fuel caterer's oven capacity	5.75 cu. ft.—fits full-size 18" x 26" sheet pan	5.75 cu. ft.—fits full-size 18" x 26" sheet pan	5.75 cu. ft.—fits full-size 18" x 26" sheet pan
Dual-fuel everyday oven capacity	2.5 cu. ft.—fits standard 9" x 13" casserole dish	2.5 cu. ft.—fits standard 9" x 13" casserole dish	2.5 cu. ft.—fits standard 9" x 13" casserole dish
Dual-fuel full-extension self-clean oven racks	3	3	3
full-size caterer's oven everyday oven	2	2	2
All-gas (ZGP models):			
Dual-flame stacked sealed burners	(4) 18,000 BTU (nat.)	(6) 18,000 BTU (nat.)	(6) 18,000 BTU (nat.)
Stainless steel and aluminum clad, thermostatically controlled griddle (200–450°F)	18,000 BTU (nat.)		18,000 BTU (nat.)
All-gas adjustable-output ceramic IR grill	15,000 BTU (nat.)	15,000 BTU (nat.)	15,000 BTU (LP)
All-gas caterer's oven capacity	6.2 cu. ft.—fits full-size 18" x 26" sheet pan	6.2 cu. ft.—fits full-size 18" x 26" sheet pan	6.2 cu. ft.—fits full-size 18" x 26" sheet pan
All-gas everyday oven capacity	2.7 cu. ft.—fits standard 9" x 13" casserole dish	2.7 cu. ft.—fits standard 9" x 13" casserole dish	2.7 cu. ft.—fits standard 9" x 13" casserole dish
All-gas full-extension self-clean oven racks/flat rack	2/1	2/1	2/1
full-size caterer's oven everyday oven	2	2	2
All-gas infrared broil	12,500 BTU	12,500 BTU	12,500 BTU
All-gas dual burner bake	9,000 BTU	9,000 BTU	9,000 BTU
Ovens (all models):			
Self-cleaning ovens	both ovens, Midnight blue interior	both ovens, Midnight blue interior	both ovens, Midnight blue interior
Monogram® Professional oven system	both ovens	both ovens	both ovens
Reverse-Air convection system	both ovens	both ovens	both ovens
Broil and bake	both ovens	both ovens	both ovens
Convection bake and roast	both ovens	both ovens	both ovens
Broil pans	2	2	2
Convection roasting rack	1	1	1
full-size caterer's oven everyday oven	5	5	5
Rack positions	4	4	4
Halogen light columns	6 lamps—caterer's oven 3 lamps—everyday oven	6 lamps—caterer's oven 3 lamps—everyday oven	6 lamps—caterer's oven 3 lamps—everyday oven
Automatic meat probe	both ovens	both ovens	both ovens
Digital oven temperature/timer display	both ovens	both ovens	both ovens
Appearance			
Control knobs	Diecast metallic—included Diecast black—optional	Diecast metallic—included Diecast black—optional	Diecast metallic—included Diecast black—optional
Burner "ON" indicator lights	•	•	•
LED bullnose task lighting	•		
Stainless steel grill/griddle covers	2	1	1
Grill accessory			ZXGRILL
Optional adjustable-height stainless steel toekick	included	included	
Factory-installed island backguard	included	included	included
Optional 12" stainless steel backsplash	ZX12B48PSS	ZX12B48PSS	ZX12B48PSS
Optional adjustable-height (30"–36") stainless steel backsplash with warming shelf	ZXADJB48PSS	ZXADJB48PSS	ZXADJB48PSS
General features			
Certified Sabbath mode, Star K	•	•	•
LP fuel conversion kit/high-altitude conversion kit*	included/WB28K10553	included/WB28K10553	included/WB28K10553
Power cord—factory-installed	•	•	•
Front-accessible gas shut-off valve	•	•	•
Dual-fuel recommended circuit @240VAC	50	50	50
All-gas recommended circuit @120VAC	15	15	15
Approx. shipping weight (lbs.)	650	650	650
Exterior dimensions (WxHxD in inches)	47-7/8 x 35-1/4–36-3/4 x 28-1/4 (excluding handle)	47-7/8 x 35-1/4–36-3/4 x 28-1/4 (excluding handle)	47-7/8 x 35-1/4–36-3/4 x 28-1/4 (excluding handle)
Limited warranty**	2-year	2-year	2-year
Limited gas surface burner warranty**	5-year	5-year	5-year
Limited oven rack warranty**	Lifetime	Lifetime	Lifetime

*Must be installed by a qualified service technician.
**See written warranty for details.



36" and 30" professional ranges

	ZDP366NRPSS ZGP366NRRSS/ZGP366LRRSS	ZDP364NRPSS	ZDP364NDPSS ZGP364NDRSS/ZGP364LDRSS	ZDP304NPSS ZGP304NRSS/ZGP304LRSS
Description	36" range with 6 burners	36" range with 4 burners and grill	36" range with 4 burners and griddle	30" range with 4 burners
Rangetop (all models):				
Adjustable simmer down to 140° F	all burners	all burners	all burners	all burners
Electronic ignition with automatic reignition	all burners	all burners	all burners	all burners
Reversible cast-iron, porcelain-enameled wok grates	all burners	all burners	all burners	all burners
Seamless porcelain burner pans	•	•	•	•
Bamboo cutting board			•	
Reversible cast-iron grill grate		•		
Dual-fuel (ZDP models):				
Dual-flame stacked sealed burners	(6) 18,000 BTU	(4) 18,000 BTU	(4) 18,000 BTU	(1) 18,000 BTU, (3) 10,000 BTU
Stainless steel and aluminum clad, thermostatically controlled griddle (200°–450°F.)			18,000 BTU	
Dual-fuel adjustable-output ceramic IR grill		15,000 BTU		
Dual-fuel caterer's oven capacity	5.75 cu. ft.—fits full-size 18" x 26" sheet pan	5.75 cu. ft.—fits full-size 18" x 26" sheet pan	5.75 cu. ft.—fits full-size 18" x 26" sheet pan	5.3 cu. ft.
Dual-fuel full-extension self-clean oven racks	3	3	3	3
All-gas (ZGP models):				
Dual-flame stacked sealed burners	(6) 18,000 BTU (nat.) (6) 15,000 BTU (LP)	(4) 18,000 BTU (nat.)	(4) 18,000 BTU (nat.) (4) 15,000 BTU (LP)	(1) 18,000 BTU, (3) 10,000 BTU (nat.) (1) 18,000 BTU, (3) 10,000 BTU (LP)
Stainless steel and aluminum clad, thermostatically controlled griddle (200°–450°F.)			18,000 BTU (nat.) 16,000 BTU (LP)	
All-gas adjustable-output ceramic IR grill		15,000 BTU (nat.)		
All-gas caterer's oven capacity	6.2 cu. ft.—fits full-size 18" x 26" sheet pan	6.2 cu. ft.—fits full-size 18" x 26" sheet pan	6.2 cu. ft.—fits full-size 18" x 26" sheet pan	5.7 cu. ft.
All-gas full-extension self-clean oven racks/flat rack	2/1	2/1	2/1	2/1
All-gas infrared broil	12,500 BTU	12,500 BTU	12,500 BTU	12,500 BTU
All-gas dual burner bake	•	•	•	•
Ovens (all models):				
Self-cleaning ovens	• (Midnight blue interior)	• (Midnight blue interior)	• (Midnight blue interior)	• (Midnight blue interior)
Monogram Professional oven system:	•	•	•	•
Reverse-Air convection system	•	•	•	•
Broil and bake	•	•	•	•
Broil pans	1	1	1	1
Convection roasting rack	1	1	1	1
Rack positions	5	5	5	5
Halogen light columns	6 lamps	6 lamps	6 lamps	6 lamps
Automatic meat probe	•	•	•	•
Digital oven temperature/timer display	•	•	•	•
Appearance				
Diecast knobs	Diecast metallic—included Diecast black—optional	Diecast metallic—included Diecast black—optional	Diecast metallic—included Diecast black—optional	Diecast metallic—included Diecast black—optional
Burner "ON" indicator lights	•	•	•	•
LED bullnose task lighting	•	•	•	•
Stainless steel grill/griddle covers		1	1	
Grill accessory	ZXGRILL	ZXGRILL	ZXGRILL	ZXGRILL
Optional adjustable-height stainless steel toekick	included	included	included	included
Factory-installed island backguard	included	included	included	included
Optional 12" stainless steel backsplash	ZX12B36PSS	ZX12B36PSS	ZX12B36PSS	ZX12B30PSS
Optional adjustable-height (30"–36") stainless steel backsplash with warming shelf	ZXADJB36PSS	ZXADJB36PSS	ZXADJB36PSS	ZXADJB30PSS
General features				
Certified Sabbath mode, Star K	•	•	•	•
LP fuel conversion kit/high-altitude conversion kit	included/WB28K10553	included/WB28K10553	included/WB28K10553	included/WB28K10553
Power cord—factory-installed	•	•	•	•
Front-accessible gas shut-off valve	•	•	•	•
Dual-fuel recommended circuit @240VAC	30	30	30	30
All-gas recommended circuit @120VAC	15	15	15	15
Approx. shipping weight (lbs.)	475	475	475	425
Exterior dimensions (WxHxD in inches)	35-7/8 x 35-1/4–36-3/4 x 28-1/4 (excluding handle)	35-7/8 x 35-1/4–36-3/4 x 28-1/4 (excluding handle)	35-7/8 x 35-1/4–36-3/4 x 28-1/4 (excluding handle)	29-7/8 x 35-1/4–36-3/4 x 28-1/4 (excluding handle)
Limited warranty**	2-year	2-year	2-year	2-year
Limited gas surface burner warranty**	5-year	5-year	5-year	5-year
Limited oven rack warranty**	Lifetime	Lifetime	Lifetime	Lifetime

*Must be installed by a qualified service technician.
**See written warranty for details.

Backsplash options.

All models come equipped for island or noncombustible wall installations. Optional fixed (12") or adjustable-height (30"–36") backsplashes are available. The adjustable-height backsplash comes with a slotted shelf/warming rack and is designed to fill the space between the range and the hood.



ZX12B48PSS
12" backsplash



ZXADJB48PSS
30"–36" adjustable-height backsplash with warming shelf

Accessories included

Depending on the model and space requirements, the toekick, power cord, grill and griddle covers, bamboo cutting board, island vent trim and other accessories are included—and not offered a la carte.



Backsplash options.



ZX12B36PSS
12" backsplash
ZX12B30PSS
12" backsplash



ZXADJB36PSS
ZXADJB30PSS
30"–36" adjustable-height backsplash with warming shelf



Single and double electronic convection wall ovens

	ZET1FHSS	ZET1SHSS ZET1PHSS	ZET2SHSS ZET2PHSS
Description	30" French-door single oven	30" single oven	30" double oven
Performance			
Self-cleaning oven(s)	•	•	•
Oven capacity	5.0 cu. ft.	5.0 cu. ft.	5.0 cu. ft. (each oven)
True European Convection with Direct Air	•	•	•
True hidden bake element(s)	•	•	•
Ten-pass dual broil element	•	•	•
Ten-pass bake element	•	•	•
Multi-rack convection bake	•	•	•
Single-rack convection bake	•	•	•
Convection roast	•	•	•
Convection broil	•	•	•
Standard/dual zone broil	Hi/Lo	Hi/Lo	Hi/Lo
Thermal Bake	•	•	•
Thermal Broil	•	•	•
208/240V performance compensation	•	•	•
Broil pan and grid	•	•	•
Convenience			
Controls	Electronic Dial	Electronic Dial	Electronic Dial
Full-extension self-clean porcelain oven racks	3, 2 Full Extension	3, 2 Full Extension	3, 2 Full Extension (each oven)
Theatre-style LED oven lighting	2 LED light columns	2 LED light columns	2 LED light columns (each oven)
Self-clean delay option	•	•	•
WiFi Connect	•	•	•
Digital temperature display	•	•	•
Notification lighting/audible preheat signal	•	•	•
Electronic clock and kitchen timer	•	•	•
Delay bake option with warm mode	•	•	•
Proof mode	•	•	•
Warm mode	•	•	•
Auto oven shut-off w/override	•	•	•
Control lock capability	•	•	•
Certified Sabbath mode	•	•	•
Appearance			
Oven door(s)	French door design	All-glass interior door	All-glass interior door (each oven)
Handle	Professional	Tubular Professional	Tubular Professional
Control knobs	LED backlit electronic control knobs	LED backlit electronic control knobs	LED backlit electronic control knobs
Hand-polished, welded door seams	•	•	•
Under-cooktop and undercounter installation	•	•	•
Side-by-side installation	•	•	•
Flush appearance installation		•	•
General features			
Oven cabinet width required (in.)	30	30	30
Rack positions	6 ladder-rack positions	6 ladder-rack positions	6 ladder-rack positions (each oven)
Interior dimensions upper	25 x 17-3/8 x 20-1/4	25 x 17-3/8 x 20-1/4	25 x 17-3/8 x 20-1/4
Interior dimensions lower			25 x 17-3/8 x 20-1/4
Overall dimensions (WxHxD in inches)	29-3/4 x 28-3/8 x 27-1/8	29-3/4 x 28-3/8 x 27-1/8	29-3/4 x 52-5/8 x 27-1/8
KW rating @ 240VAC	4.30	4.30	4.30
KW rating @ 208VAC	3.90	3.90	3.90
Amps rating @ 240VAC	20	20	40.08
Amps rating @ 208VAC	20	20	40
Approx. shipping weight (lbs.)	208	208	390
Limited warranty*	1-year	1-year	1-year

*See written warranty for details.



Single and double electronic wall ovens

	ZET9050SHSS	ZET9550SHSS	ZEK7000SHSS	ZEK7500SHSS
Description	30" single oven	30" double oven	27" single oven	27" double oven
Performance				
Self-cleaning oven(s)	•	•	•	•
Oven capacity	5.0 cu. ft.	5.0 cu. ft. (each oven)	4.3 cu. ft.	4.3 cu. ft. (each oven)
True European Convection	with Direct Air	with Direct Air (both ovens)	•	•
True hidden bake element(s)	•	•	•	•
Multi-rack convection bake	•	•	•	•
Single-rack convection bake	•	•	•	•
Closed-door broiling	•	•	•	•
Convection element	•	•	•	•
Variable broil; broil element	10-pass	10-pass	•	•
Bake element	10-pass	10-pass	•	•
Convenience				
Electronic glass touch controls	•	•	•	•
Self-clean porcelain-coated oven racks	3, 1 full extension	3, 1 full extension	3, 1 full extension	3, 1 full extension
Standard halogen lighting			2	2 (each oven)
Theatre-style halogen lighting	3	3 (both ovens)		
Self-clean delay option	•	•	•	•
WiFi Connect	•	•	•	•
Digital temperature display	•	•	•	•
Notification lighting	•	•		
Audible preheat signal	•	•	•	•
Electronic clock and kitchen timer	•	•	•	•
Delay bake option with warm mode	•	•	•	•
Proof mode	•	•	•	•
Warm mode	•	•	•	•
Auto oven shut-off w/override	•	•	•	•
Control lock capability	•	•	•	•
Certified Sabbath mode	•	•	•	•
Appearance				
Oven door(s)	Stainless steel	Stainless steel	Stainless steel	Stainless steel
Monogram® tubular handle	•	•	•	•
Hand-polished, welded door seams	•	•	•	•
Flush appearance installation	•	•	•	•
Under-cooktop and undercounter installation	•			
Side-by-side installation	•		•	
General features				
Oven cabinet width required (in.)	30	30	27	27
Rack positions	6	6	6	6
Interior dimensions upper		25 x 17-3/8 x 20-1/4		21-1/2 x 17-1/4 x 20
Interior dimensions lower	25 x 17-3/8 x 20-1/4	25 x 17-3/8 x 20-1/4	21-1/2 x 17-1/4 x 20	21-1/2 x 17-1/4 x 20
Overall dimensions (WxHxD in inches)	29-3/4 x 28-3/8 x 27-3/16	29-3/4 x 52-5/8 x 27-3/16	26-23/32 x 30-3/16 x 26-23/32	23-23/32 x 52-1/8 x 26-5/8
@ 240VAC	4.50	9.00	3.60	7.20
KW rating @ 208VAC	3.40	6.80	2.70	5.40
KW rating @ 240VAC	20	40	20	30
Amps rating @ 208VAC	20	40	20	30
Approx. shipping weight (lbs.)	184	330	140	250
Limited warranty*	1-year	1-year	1-year	1-year

*See written warranty for details.



Advantium® ovens with Speedcook technology

	ZSC2201JSS	ZSC2202JSS	ZSC1001JSS	ZSC1201JSS ZSC1202JSS	ZSA1201JSS ZSA1202JSS
Description					
	30" built-in wall oven	30" built-in wall oven	27" built-in wall oven (30" with trim kit)	30" built-in wall oven	Above-the-cooktop oven
Performance					
Halogen power	2400 watts	2400 watts	500 watts	500 watts	500 watts
Microwave power	950 watts	950 watts	975 watts	975 watts	925 watts
Convection element	1500 watts	1500 watts	1500 watts	1500 watts	1550 watts
Bake element	500 watts	500 watts	700 watts (upper) 375 watts (lower)	700 watts (upper) 375 watts (lower)	700 watts (upper) 375 watts (lower)
Oven controls					
Speedcook mode	2 to 8x faster*	2 to 8x faster*	2 to 4x faster*	2 to 4x faster*	2 to 4x faster*
Convection mode	•	•	•	•	•
Warm/Proof mode	•	•	•	•	•
Electronic scrolling display	•	•	•	•	•
Preprogrammed menu items	More than 175	More than 175	More than 175	More than 175	More than 175
Help mode	•	•	•	•	•
Demo mode	•	•	•	•	•
Interior oven light	•	•	•	•	•
Beeper sound level control	•	•	•	•	•
Control lock-out	•	•	•	•	•
Microwave oven					
Microwave express	•	•	•	•	•
Sensor	•	•	•	•	•
Defrost—auto/time	•	•	•	•	•
Accessories					
Grilling tray	16", porcelain enamel	16", porcelain enamel			0
Baking tray	16", porcelain enamel	16", porcelain enamel	16", nonstick	16", nonstick	
Microwave tray	16", clear glass	16", clear glass	16", clear glass	16", clear glass	•
Aluminium broiling tray			•	•	
Second-tier baking rack	•	•	•	•	•
Appearance					
Design	European	Professional	European	European Professional	European Professional
Color appearance	Stainless steel Black-painted steel	Stainless steel	Stainless steel Black-painted steel	Stainless steel Stainless steel	Stainless steel
Flush appearance installation	•	•	•	•	
Stainless steel oven interior	•	•	•	•	•
General features					
Undercounter installation				•	
Under-cooktop installation				ZEU30R, ZEU36R	
Approx. shipping weight (lbs.)	100	105	100	100	97
Overall oven interior dimensions (WxHxD in inches)	20-1/2 x 9-1/4 x 17	20-1/2 x 9-1/4 x 17	20-1/16 x 8-1/2 x 17	20-1/2 x 9-1/4 x 17	21-1/2 x 9-3/8 x 14-1/4
Overall exterior dimensions (WxHxD in inches) (not including handle)	29-3/4 x 19 x 21-1/2	29-3/4 x 19 x 21-1/2	26 3/4 x 18-5/8 x 21-1/2 without trim 29-3/4 x 18-5/8 x 21-1/2 with trim	29-3/4 x 19 x 21-1/2	29-15/16 x 16-7/16 x 15-3/8
Amps rating @ 240/208VAC 120VAC	25.9	25.9		13.8	15
Optional storage drawer accessory	ZX2201NSS (stainless steel model only)			ZX2201NSS (ZSC1201JSS model only)	
Limited warranty**	1-year	1-year	1-year	1-year	1-year
Limited magnetron warranty**	5-year	5-year	5-year	5-year	5-year

*See written warranty for details.



Microwave ovens

	ZEB1226SHSS	ZEM115SFSS
Description		
	Full-size countertop microwave oven	Countertop microwave oven
Performance		
Oven cavity (cu. ft.)	2.2	1.1
Power rating*	1100 watts	800 watts
Electronic touch controls	•	•
Instant-on controls	•	•
Power levels	10	10
Micro Cook I & II	•	•
Sensor cooking controls	Popcorn, beverage, potato, vegetable, MyPlate menu, reheat, defrost	Popcorn, reheat, beverage, vegetable and potato
Convenience		
Turntable	•	•
Add 30 seconds	•	•
Express cook	•	•
Kitchen timer	•	•
Weight/Time defrost	•	•
Child lock-out	•	•
Sound on/off	•	
Appearance		
Color appearance	Stainless steel door (black case)	Stainless steel door (black case)
General features		
Optional built-in kit	JX2127SH (27") JX2130SH (30")	JX827SFSS (27") JX830SFSS (30")
Hanging kit		JXA019K
Amps @ 120VAC		11.5
Interior dimensions (WxHxD in inches)	17 x 11-5/8 x 18-7/8	17-3/8 x 9 x 12-1/4
Overall dimensions (WxHxD in inches)**	24-1/8 x 14 x 19-3/4	24 x 12-1/8 x 12 7/8
Approx. shipping weight (lbs.)	51	34
Limited warranty†	1-year	1-year
Limited magnetron warranty†	5-year	

*IEC-705 test procedure
**Depth excludes handle.
†See written warranty for details.



Warming drawers

	ZW9000SJSS	ZJ7000SJSS
Description		
	30" warming drawer	27" warming drawer
Features		
Drawer capacity	1.90 cu. ft.	1.67 cu. ft.
Infinite-setting temperature control	75°F-230°F	75°F-230°F
Humidity control	Crisp/moist	Crisp/moist
Hidden control	•	•
Full-extension slides	•	•
On/off switch	•	•
"On" indicator light	•	•
Half rack	•	•
Appearance		
Color appearance	Stainless steel	Stainless steel
Frameless drawer front	•	•
Monogram tubular handle	•	•
Accessories		
Custom panel kit*	ZXD30B	ZXD27B
Professional panel kit	ZXD9030P	
General features		
Overall dimensions (WxHxD in inches)	30 x 10-1/2 x 26	26-3/4 x 10-1/2 x 26
Cutout dimensions (WxHxD)	28-1/2 x 9-1/4 x 23-1/2	25-1/2 x 9-1/4 x 23-1/2
KW rating @ 120VAC	.45	.45
Amps @ 120VAC	15	15
Warming element	450W	450W
Approx. shipping weight (lbs.)	65	59
Limited warranty**	1-year	1-year

*Does not fit flush with surrounding cabinetry.
**See written warranty for details.



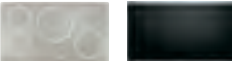
48" and 36" professional rangetops

	ZGU486NDPSS	ZGU366NPSS	ZGU364NDPSS
Description			
	48" rangetop with 6 burners and griddle	36" rangetop with 6 burners	36" rangetop with 4 burners and griddle
Rangetop			
Dual-flame stacked sealed burners	(6) 18,000 BTU (Nat. gas)	(6) 18,000 BTU (Nat. gas)	(4) 18,000 BTU (Nat. gas)
Adjustable simmer down to 140° F	all burners	all burners	all burners
Electronic ignition with automatic reignition	all burners	all burners	all burners
Reversible cast-iron, porcelain-enameled wok grates	all burners	all burners	all burners
Seamless porcelain burner pans	•	•	•
Stainless steel and aluminum clad, thermostatically controlled griddle (200°–450°F)	18,000 BTU (Nat. gas) 16,000 BTU (LP)	•	18,000 BTU (Nat. gas) 16,000 BTU (LP)
Bamboo cutting board	•		•
Adjustable-output ceramic IR grill	•	•	•
Reversible cast-iron grill grate	•	•	•
Appearance			
Control knobs	Diecast metallic—including Diecast black—optional	Diecast metallic—including Diecast black—optional	Diecast metallic—including Diecast black—optional
Burner "ON" indicator lights	•	•	•
LED bullnose task lighting	•	•	•
Stainless steel griddle covers	•	•	•
Grill Accessory	ZXGRILL	ZXGRILL	ZXGRILL
Factory-installed island backguard	included	included	included
Optional 12" stainless steel backsplash	ZX12B48PSS	ZX12B36PSS	ZX12B36PSS
Optional adjustable-height (30"–36") stainless steel backsplash with warming shelf	ZXADJB48PSS	ZXADJB36PSS	ZXADJB36PSS
General features			
LP fuel conversion kit	included	included	included
High-altitude conversion kit	WB28K10553	WB28K10553	WB28K10553
Recommended circuit @120VAC	15	15	15
Approx. shipping weight (lbs.)	340	240	240
Exterior dimensions (WxHxD in inches)	47-7/8 x 8-7/16 x 28-1/4	35-7/8 x 8-7/16 x 28-1/4	35-7/8 x 8-7/16 x 28-1/4
Limited warranty*	2-year	2-year	2-year
Limited gas surface burner warranty*	5-year	5-year	5-year
*See written warranty for details.			



Gas cooktops

	ZGU385NSMSS	ZGU384NSMSS
Description		
	36" stainless steel gas cooktop	30" stainless steel gas cooktop
Performance		
Sealed burners	5	4
Dual-flame stacked burners	5	4
Total BTU output (Nat. gas)	62,000	50,000
140°F simmer burners	5	4
Electronic ignition with automatic reignition	•	•
Convenience		
Cooktop surface	Stainless steel	Stainless steel
Cast-iron, porcelain-enameled burner grates	•	•
Continuous, integrated interlocking grates	•	•
Machined, stainless steel knobs	•	•
Front-mounted center controls	•	
Tactile-grip knobs	•	•
Burner setting indicator lights	5 embedded in knobs	4 embedded in knobs
Appearance		
Color appearance	Stainless steel	Stainless steel
General features		
LP fuel-conversion kit	included	included
High-altitude kit*	WB28T10185	WB28T10185
Overall dimensions (WxHxD in inches)	36-3/4 x 3-3/4 x 21-3/16	30-3/4 x 3-3/4 x 21-5/8
	(1) 18 (2) 12 (2) 10	(1) 18 (1) 12 (2) 10
Burners (18,000 BTUs) Nat. gas		
Amps @ 120VAC	5.0	5.0
Approx. shipping weight (lbs.)	68	55
Limited warranty**	1-year	1-year
	*Must be installed by a qualified service technician. **See written warranty for details. An HVI certified vent hood or downdraft of the same or greater width having 350 CFM minimum is recommended.	



Induction and electric radiant cooktops

	ZHU36RSJSS	ZHU30RSJSS	ZEU36RSJSS	ZEU30RSJSS
Description	36" induction cooktop	30" induction cooktop	36" electric radiant cooktop	30" electric radiant cooktop
Performance				
Number of elements	5, induction	4, induction	5, radiant ribbon	5, radiant ribbon
Front right element	8" (3200W)	11" (3700W)	9"/7"/5" tri-ring PowerBoil (3000W)	8"/5" dual-ring (2200W)
Front left element	7" (2500W)	7" (2500W)	7" (1500W)	7" (1500W)
Rear right element	6" (1800W)	6" (1800W)	6" (1200W)	6" (1200W)
Rear left element	7" (2500W)	7" (2500W)	7" (1500W)	7" (1500W)
Center element	11" (3700W)		12"/9"/6" tri-ring PowerBoil (3600W)	9"/7"/5" tri-ring PowerBoil (3000W)
Element power generators	3	2		
Convenience				
Controls	Electronic glide touch	Electronic glide touch	Electronic glide touch	Electronic glide touch
Pan presence sensor	•	•		
Pan size sensor	•	•		
Sync-burners control	•	•	•	•
Custom settings	•	•	•	•
Kitchen timer	•	•	•	•
Multi-element timer	•	•	•	•
Control lock capability	•	•	•	•
Cooktop ON light	•	•	•	•
All-off control	•	•	•	•
Melt setting	•	•	•	•
Keep warm setting			•	•
Power level indicators	19 levels	19 levels	19 levels	19 levels
Hot-surface indicators	5, 1 per element	4, 1 per element	5, 1 per element	5, 1 per element
Stainless steel clad aluminum griddle	Included	Included	Included	Included
Appearance				
Glass surface color	Silver	Silver	Black	Black
LED display color	White	White	Red and white	Red and white
Stainless steel frame			Yes, full perimeter	Yes, full perimeter
Flush-mount capable	Yes, with kit	Yes, with kit	No	No
Optional accessories				
Flush-mount kit	JXFLUSH1	JXFLUSH1		
Precision cooking probe kit	JXSOU SV1	JXSOU SV1		
General features				
Overall dimensions (WxDxH in inches)	36 x 20-3/8 x 4-5/8	29-3/4 x 20-7/8 x 4-5/8	36 x 20-7/8 x 6	29-7/8 x 21-3/8 x 6
KW rating @ 240VAC	11.6	7.7	10.8	9.4
	10.1	6.9	8.1	7.1
Recommended circuit breaker size (Amps)	50	40	50	40
Approx. shipping weight (lbs.)	58	48	55	48
Limited warranty*	1-year	1-year	1-year	1-year
	* See written warranty for details An HVI certified vent hood or downdraft of the same or greater width having 300 CFM minimum air flow is recommended"			



Chimney hoods

	ZV1050SFSS	ZV950SDSS	ZV850SPSS	ZV750SPSS	ZV830SMSS	ZV800SJSS	ZV900SLSS	ZV925SLSS
Description	42" island chimney hood	36" wall-mount chimney hood	36" island chimney hood	36" wall-mount chimney hood	30" wall-mount chimney hood	36" wall-mount chimney hood	36" wall-mount chimney hood	36" island chimney hood
Features								
Electronic touch controls	•	•	•	•	•	•	•	•
Vertical exhaust blower rating—high speed	1040 CFM	690 CFM	350 CFM	350 CFM	420 CFM	460 CFM	490 CFM	490 CFM
Sones	10.0	6.0	10.0, 6.0	10.0, 6.0	9.0	7.0	8.0	8.0
Working speed	450/2.5	330/1.3	170/1.1	170/1.1	190/2.0	220/2.0	230/2.0	230/2.0
Dual blowers	•	•						
Boost mode	•	•	•	•	•	•	•	•
Retractable glass canopy						•		
Halogen lamps	4	4	4	4	2	2	2	4
Variable lighting control	6-level	6-level	6-level	6-level	4-level	6-level	4-level	4-level
Removable stainless steel filters	4	3	3	3	1	2	1	1
Filter cleaning reminder	•	•	•	•				
Variable-speed fan control	4-level	4-level	4-level	4-level	4-level	4-level	4-level	4-level
Time-delay shut-off	•	•	•	•				
Blower indicator light	•	•	•	•		•	LCD display	LCD display
Stainless steel utensil racks	•	•	•	•				
Recirculating kit			included	included	•	included	included	included
Appearance								
Color appearance	Stainless steel	Stainless steel	Stainless steel	Stainless steel	Stainless steel	Stainless steel	Glass/ Stainless steel	Glass/ Stainless steel
Exhaust options								
8" round exhaust duct	•	•			•		•	•
6" round exhaust duct			•	•		•		
Exhaust damper	•	•	•	•	•	•	•	•
8' ceiling duct cover	included	included	included	included	included	included	included	included
9' ceiling duct cover	ZX1059SFSS (optional)	included	included	included	included	included	included	included
10' ceiling duct cover	ZX10510SFSS (optional)	included	ZX8510SPSS (optional)*	ZX7510SPSS (optional)	included	included	ZX90010 (optional)	ZX92510 (optional)
12' ceiling duct cover accessory					ZX83012 (optional)			
10' to 14' ceiling extension duct cover		ZX14SDSS (optional)						
General features								
Overall dimensions (WxHxD in inches)	42 x 10 x 31-1/2	35-5/8 x 10 x 25	35-3/8 x 8-1/4 x 27-1/2	34-5/8 x 8-1/4 x 21-5/8	29-7/8 x 5-7/8 x 18-7/8	36 x 1-1/2 x 18-15/16 36 x 1-1/2 x 13-11/16	35-7/8 x 3-1/4 x 20-7/16**	35-7/8 x 3-1/4 x 27-9/16**
Amps @ 120VAC	6.7	4.5	3.7	3.7	12.0	3.3	4.3	4.6
Approx. shipping weight (lbs.)	150	110	81	81	81	100	123	146
Limited warranty†	1-year	1-year	1-year	1-year	1-year	1-year	1-year	1-year
	*ZV850SP hood requires one of the ceiling extension duct covers. **Not including ductwork and covers. †See written warranty for details.							



The Home Ventilating Institute (HVI) is a third party certification organization focused on providing a fair and credible method of comparing ventilation performance of similar products. Many agencies such as ENERGY STAR and ASHRAE utilize HVI certification for performance assurance. All Monogram ventilation products are certified by HVI.

Some key performance criteria measured by HVI are sound level measured in sones, high speed and working speed measured in cubic feet per minute (cfm).

A **sones** is an internationally recognized measurement of sound output. Sones translate decibel ratings into numbers that correspond to the way people sense loudness. The lower the sone number the quieter the sound.

Working Speed, is defined as the speed that produces 100 cfm, or the lowest speed above 100 cfm that a hood can produce, when working on the same duct system as the maximum speed.

(HVI916, March 1, 2009) (<http://hvi.org/faqs.html>)



Professional hoods

	ZV48RSFSS	ZV36RSFSS	ZV48TSFSS	ZV36TSFSS	ZV48SSFSS	ZV36SSFSS ZV30SSFSS	ZV54ISHSS	ZV30HSRSS
Description								
	48" professional restaurant-style	36" professional restaurant-style	48" professional tapered-sided	36" professional tapered-sided	48" professional straight-sided	36" and 30" professional straight-sided	54" professional island hood	30" wall mounted under cabinet hood
Features								
Variable-speed fan control	4-speed	4-speed	4-speed	4-speed	4-speed	4-speed	4-speed	4-speed
High speed/internal blower rating	1090 CFM	620 CFM	1090 CFM	620 CFM	1090 CFM	620 CFM	1090 CFM	530 CFM
Sones	13.0	9.0	13.0	9.0	13.0	9.0	13.0	9.0
Working speed	430/2.5	240/1.1	430/2.5	240/1.1	430/2.5	240/1.1	430/2.5	240/2.0
Halogen lamps	3	2	3	2	3	2	6	2
Variable lighting control	4-level	4-level	4-level	4-level	4-level	4-level	4-level	4-level
Infrared warming lights	2	1	2	1	2	1		
Removable stainless steel filters	3 mesh	2 mesh	3 baffle	2 baffle	3 baffle	2 baffle	3 baffle	3 baffle
Stainless steel backsplash	•	•						
Stainless steel warming shelf	•	•						
Grease trays	1	1	3	2	3	2	3	
Blower indicator light	•	•	•	•	•	•	•	
Stainless steel utensil racks	•	•	•	•	•	•	•	
Recirculating kit								included
10" round exhaust duct	•	•	•	•	•	•	•	
Exhaust damper	•	•	•	•	•	•	•	
Snap-in blower assembly	•	•	•	•	•	•	•	
8" round exhaust duct								•
Appearance								
Color appearance	Stainless steel	Stainless steel	Stainless steel	Stainless steel	Stainless steel	Stainless steel	Stainless steel	Stainless steel
Accessories								
6" standard stackable duct cover	ZX48DC6	ZX36DC6	ZX48DC6	ZX36DC6	ZX48DC6	ZX36DC6		
12" standard stackable duct cover	ZX48DC12	ZX36DC12	ZX48DC12	ZX36DC12	ZX48DC12	ZX36DC12		
8" duct cover (7'11"-8'5" ceiling height)							included	
9' or 10' duct cover extension							ZX54DC10	
General features								
Overall dimensions (WxHxD in inches)	48 x 22-1/2 x 25	36 x 22-1/2 x 25	48 x 18 x 25	36 x 18 x 25	48 x 18 x 25	36 x 18 x 25 30 x 18 x 25	54 x 24 x 36-1/4	30 x 15-1/2 x 22
Amps @ 120 VAC	12.4	6.4	12.4	6.4	12.4	6.4	10.4	3.32
Approx. shipping weight (lbs.)	130	110 100	130	110 100	130	110 100	210	90
Limited warranty*	1-year	1-year	1-year	1-year	1-year	1-year	1-year	1-year
	*See written warranty for details.							

ZV30HSRSS riser installation options (included).



3-1/2" riser installation option for vented applications



3-1/2" riser with louvers - required for recirculating applications



Installation without riser optional for vented applications



See page 181 for HVI Certification description



Custom hood inserts

	ZVC48LSS	ZVC42LSS	ZVC36LSS	ZVC30LSS
Description				
	48" custom hood insert	42" custom hood insert	36" custom hood insert	30" custom hood insert
Performance				
Electronic touch controls	Remote mount	Remote mount	Remote mount	Remote mount
Vertical exhaust blower rating	1140 CFM	1140 CFM	640 CFM	640 CFM
Sones	16.5	16.5	14.0	14.0
Working speed	490/4.0	490/4.0	250/3.5	250/3.5
Dual blowers	•	•		
Halogen lamps	3	3	2	2
Variable lighting control	4-level	4-level	4-level	4-level
Removable stainless steel filters	3	3	2	2
Variable-speed fan control	4-speed	4-speed	4-speed	4-speed
Fan sensor feature auto "on"	•	•	•	•
Exhaust damper	•	•	•	•
Snap-in blower assembly	•	•	•	•
Appearance				
Color appearance	Integrated	Integrated	Integrated	Integrated
Exhaust options				
8" round exhaust duct	•	•	•	•
General features				
Cabinet width (in inches)	48	42	36	30
Overall dimensions, hood and liner (WxHxD in inches)	46-1/2 x 18 x 21-1/4	40-1/2 x 18 x 21-1/4	34-1/2 x 18 x 21-1/4	28-1/2 x 18 x 21-1/4
Liner height, below cabinet (in inches)	4	4	4	4
Amps @ 120 VAC	10.34	10.34	5.33	5.33
Approx. shipping weight (lbs.)	122	115	77	69
Limited warranty*	1-year	1-year	1-year	1-year
ADA compliant	•	•	•	•
	*See written warranty for details.			



Telescopic downdraft vents

	ZVB36STSS	ZVB30STSS
Description		
	36" telescopic downdraft system	30" telescopic downdraft system
Performance		
Fan control	4-speed	4-speed
High speed/downdraft exhaust	390 CFM	390 CFM
Sones	10.5	10.5
Working speed	170/2.5	170/2.5
Removable grease filters	•	•
3-1/4" x 10" rectangular duct	•	•
Convenience		
Remote-mounted controls	•	•
Indoor remote blower kit	JXRB67	JXRB67
Appearance		
Top trim color	Stainless steel	Stainless steel
Vent body color	Stainless steel	Stainless steel
General features		
Width (in inches)	36	30
Amps @ 120VAC	4.0	4.0
Approx. shipping weight (lbs.)	74	69
Limited warranty*	1-year	1-year
ADA compliant	•	•
	*See written warranty for details.	



See page 181 for HVI Certification description

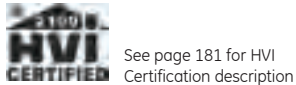
PAIRING HOODS WITH COOKING EQUIPMENT

Monogram® hoods are designed to perfectly coordinate with Monogram ranges and cooktops. To learn which cooking products can be combined with the hood you have selected, refer to the charts below.

	Wall-mounted					Island			Downdraft
	ZV750SPSS	ZV800SJSS	ZV830SMSS	ZV900SLSS	ZV950SDSS	ZV850SPSS	ZV1050SFSS	ZV925SLSS	ZVB36STSS ZVB30STSS
Installation combinations									
	All non-pro cooktops	All non-pro cooktops	All 30" non-pro cooktops	All non-pro cooktops	All 30" and 36" cooktops and ranges	All non-pro cooktops	All 30" and 36" cooktops and ranges	All non-pro cooktops	All non-pro cooktops
Style									
	Chimney	Chimney (slide-out)	Chimney	Chimney	Chimney	Chimney	Chimney	Chimney	Telescopic downdraft
Width									
	36"	36"	30"	36"	36"	36"	42"	36"	36"/30"
High speed blower rating									
	350 CFM	460 CFM	420 CFM	490 CFM	690 CFM	350 CFM	1040 CFM	490 CFM	390 CFM
Sones Working speed	<u>10.0</u> , <u>6.0</u> 210/2.0, 170/1.1	<u>7.0</u> 220/2.0	<u>9.0</u> 190/2.0	<u>8.0</u> 230/2.0	<u>6.0</u> 330/1.3	<u>10.0</u> , <u>6.0</u> 240/1.1, 170/1.1	<u>10.0</u> 450/2.5	<u>8.0</u> 230/2.0	<u>10.5</u> 170/2.5
Recirculating option									
	8'-10' 8" options	8'-10' options	8'-12' options	8'-10' 5" options	No	8'-10' 4" options	No	8'-10' 1" options	No
Vented duct cover options									
	8' to 9' 2" duct cover included; 9" to 10' 3" duct cover optional	8' to 10' duct cover included; or undercabinet option	7'11" to 10' duct cover included; 10' to 12' duct cover optional	8' to 9' 5" duct cover included; 9' 6" to 10' 5" duct cover optional	8', 9' or 10' duct cover included; 10' to 14' duct cover optional	8' to 8' 7" duct cover included; 9' to 10' 1" duct cover optional	8'1" duct cover included; 8'2" or 10' duct cover optional	8' to 9' duct cover included; 9' 1" to 10' 1" duct cover optional	Indoor remote blower option
Duct size									
	6" round	6" round	8" round	8" round	8" round	6" round	8" round	8" round	3-1/4" x 10" rect.
Equivalent duct length									
	100'	100'	100'	100'	100'	100'	100'	100'	100'

	Professional wall-mounted				Professional island	Wall or island hood inserts	
	ZV48TSFSS ZV36TSFSS	ZV48SSFSS ZV36SSFSS ZV30SSFSS	ZV48RSFSS ZV36RSFSS	ZV30HSRSS	ZV54ISHSS	ZVC36LSS ZVC30LSS	ZVC48LSS ZVC42LSS
Installation combinations							
	All Monogram cooktops and ranges	All Monogram cooktops and ranges	All Monogram cooktops and ranges	All Monogram 30" cooktops and ranges	All Monogram cooktops and ranges	All 30" and 36" cooktops and ranges	All Monogram cooktops and ranges
Style							
	Tapered	Straight	Restaurant	Wall-mounted/ undercabinet	Tapered	Insert	Insert
Width							
	48"/36"	48"/36"/30"	48"/36"	30"	54"	36"/30"	48"/42"
Blower rating							
	1090/620 CFM	1090/620/620 CFM	1090/620 CFM	530 CFM	1090 CFM	640 CFM	1140 CFM
Sones Working speed	<u>13.0</u> , <u>9.0</u> 430/2.5	<u>13.0</u> , <u>9.0</u> 430/2.5 240/1.1	<u>13.0</u> , <u>9.0</u> 430/2.5	<u>9.0</u> 240/2.0	<u>13.0</u> 430/2.5	<u>14.0</u> 250/3.5	<u>16.5</u> 490/4.0
Recirculating option							
	No	No	No	Yes	No	No	No
Vented duct cover options							
	Optional 6" and 12" duct covers; stackable	Optional 6" and 12" duct covers, standard or full-width; stackable	Optional 6" and 12" duct covers, standard or full-width; stackable	3-1/2" risers with and without louvers included	7'11" to 8'5" duct cover included; 8'6" to 10'4" duct cover optional	N/A	N/A
Duct size							
	10" round	10" round	10" round	8" round	10" round	8" round	8" round
Equivalent duct length							
	150'	150'	150'	100'	150'	100'	100'

Note: Cooktop or range not to exceed vent hood width



Built-in outdoor grills and accessories

	ZGG420NBPSS	ZGG300NBPSS
Description		
	42" grill with 2 grill burners, 1 sear burner, 1 rotisserie burner	30" grill with 2 grill burners, 1 rotisserie burner
Performance		
25,000-BTU stainless steel u-tube burner	2	2
Adjustable 23,000-BTU infrared searing burner	1	
Infrared ceramic gas rotisserie burner	1	1
Stainless steel Gourmet Radiant™ heat diffusers	•	•
Brass control valves	•	•
Electronic ignition system w/9-volt battery backup	integrated into knobs	integrated into knobs
Convenience		
Stainless steel grill grates	•	•
Halogen interior light(s)	2	1
LED bullnose lighting	•	•
Retractable warming shelf	•	•
Double-wall constructed, counterbalanced canopy	•	•
Temperature gauge	•	•
Stainless steel slide-out drip tray	•	•
Appearance		
304 steel construction	•	•
Professional diecast metallic knobs	•	•
General features		
Fuel configuration	Natural gas	Natural gas
Fuel conversion kit (Natural gas to LP)	WB28X10117	WB28X10117
Fuel conversion kit (LP to Natural gas)	WB28X10116	WB28X10116
High-altitude conversion kit*	WB28X10119	WB28X10119
Grill liner accessory	ZX42JR	ZX30JR
Stainless steel claws, stainless steel rotisserie spit, three-speed rotisserie motor	included	included
Stainless steel cooktop burner cover		
Stainless steel smoker box with cover	included	included
Porcelain-enameled basting pan	included	included
Felt-lined vinyl cover	included	included
Stainless steel double doors for built-in installation	ZX27AD	ZX27AD
Overall dimensions (WxHxD in inches)	41-7/8 x 26 x 27	29-7/8 x 26 x 27
Total surface grill area (sq. in.)	1200	840
Approx. shipping weight (lbs.)	334	253
Limited warranty**	1-year	1-year
Limited burner warranty**	5-year	5-year

*Must be installed by a qualified service technician.
**See written warranty for details.



Monogram built-in outdoor grills must use a grill liner accessory to install into combustible enclosures.

CUSTOMIZATION SPECIFICATIONS

48", 42" and 36" side-by-side refrigerators

Models	ZISB480DH ZISB420DH ZISB360DH	ZIS480NH ZIS420NH ZIS360NH
Custom options		
Stainless steel tubular handles for overlay panels	ZKHSS2	ZKHSS2
Professional stainless steel handles for overlay panels	ZKHPSS1*	ZKHPSS1*
Sabbath mode kit	ZSAB1	ZSAB1

*Includes one handle; order two kits for side-by-side refrigerators.

36" bottom-freezer refrigerators

Models	ZIC360NHRH ZIC360NHLH	ZICS360NHRH ZICS360NHRH	ZICP360NHRH ZICP360NHLH
Custom options			
Stainless steel tubular handles for overlay panels	ZKHCS2		
Professional stainless steel handles for overlay panels	ZKHPSS1*		
Unified grille kit	ZUG2	ZUGSS2	ZUGPP2
Custom handle side trim kit for 3/4"-thick custom panels	ZKHCT		
Sabbath mode kit	ZSAB1	ZSAB1	ZSAB1

*Includes one handle; order two kits for fresh food and freezer panels.

36" all-refrigerators and all-freezers

All-refrigerators models	ZIR360NHRH	ZIRS360NHRH ZIRS360NHLH	ZIRP360NHRH ZIRP360NHLH
All-freezer models	ZIF360NHLH	ZIFS360NHRH ZIFS360NHLH	ZIFP360NHRH ZIFP360NHLH
Custom options			
Stainless steel tubular handles for overlay panels	ZKHSS2		
Professional stainless steel handles for overlay panels	ZKHPSS1		
Unified grille kit	ZUG2	ZUGSS2	ZUGPP2
Sabbath mode kit	ZSAB1	ZSAB1	ZSAB1

Glossary of terms

Framed panel trim kit.

An optional trim kit that can be ordered for standard installation of custom models.

Tubular stainless steel handle.

Monogram® stainless steel tubular handle can be used with custom panels.

Tubular handle is 62-3/8" long.

Professional stainless steel handle.

Professional tubular stainless steel handle designed to fit 3/4" overlay panels.

Kit includes one handle. The professional handle is 31" long.

Unified grille panel kit.

An optional grille panel creates a unified look above two units placed side by side.

Optional Sabbath mode product kit.

Designed for use on the Jewish Sabbath and holidays, this kit allows the refrigerator to operate but will not respond to actions by the consumer.



30" fully integrated, customizable refrigerators with convertible drawer

Description	ZIC30GNHII*	ZIK30GNHII*
	30" fully integrated solid-door refrigerator	30" fully integrated glass-door refrigerator
Capacity		
Total (cu. ft.)	14.1	14.3
Features		
Fully integrated panel-ready design	•	•
Concealed door hinge	•	•
Electronic touch controls with digital readouts	•	•
Dual-refrigeration system	•	•
LED interior lighting	•	•
Adjustable glass shelves with aluminum trim	3	3
Self-closing vegetable drawer	•	•
Adjustable door bins	3	
Removable beverage rack	•	•
Freezer drawer		
Soft-close drawer with full-extension slides	•	•
Automatic icemaker	•	•
Removable ice storage bin	•	•
Convertible drawer		
	Chill: 34° to 46° F Freeze: -6°to 6° F Wine: 40°to 55° F	Chill: 34° to 46° F Freeze: -6°to 6° F Wine: 40°to 55° F
Refrigerator, freezer or wine storage		
Soft-close drawer with full-extension slides	•	•
Removable sliding storage bin	•	•
Removable drawer divider	1	1
General features		
ENERGY STAR® qualified	•	
Sabbath mode	•	•
Refrigerant type	R600a—HFC-free	R600a—HFC-free
Case/door and drawer insulation	Cyclopentane	Cyclopentane
GE water/ice filtration system	GSWF	GSWF
80" height European panel kit	ZKST300N	
	ZKST304NRH: right-hinged ZKST304NLH: left-hinged	ZKGT304NRH: right-hinged ZKGT304NLH: left-hinged
84" height European panel kit	ZKSP300N	ZKGT300N
80" height professional panel kit		
	ZKSP304NRH: right-hinged ZKSP304NLH: left-hinged	
84" height professional panel kit		
Side-by-side installation heater kit	ZUG30	ZUG30
Four-point leveling system	•	•
Adjustable door stop (90°/115°)	•	•
115 volts/15 amps	•	•
Overall dimensions (WxHxD in inches)	29-3/4 x 79-3/8 to 80-3/8 x 23-3/4	29-3/4 x 79-3/8 to 80-3/8 x 23-3/4
Approx. shipping weight (lbs.)	440	485
Limited warranty†	2-year	2-year
Limited warranty on sealed refrigeration system†	5-year	5-year
Limited warranty on sealed system parts†	12-year	12-year
	*Door panels required. †See written warranty for details.	



48", 42" and 36" built-in side-by-side refrigerators

Description	ZISP480DH ZISS480DH ZISB480DH*	ZISS480NH ZIS480NH*	ZISP420DH ZISS420DH ZISB420DH*	ZISS420NH ZIS420NH*	ZISS360DH ZISB360DH*
	48" built-in refrigerator with dispenser	48" built-in refrigerator	42" built-in refrigerator with dispenser	42" built-in refrigerator	36" built-in refrigerator with dispenser
Capacity					
Total (cu. ft.)	28.81	29.56	24.61	25.17	20.41
Fresh-food section					
Upfront electronic controls with digital readouts	•	•	•	•	•
All-level halogen light tower	•	•	•	•	•
Recessed LED top lighting	•	•	•	•	•
Recessed LED lighting in high-humidity and climate-controlled drawers	•	•	•	•	•
Multi-shelf air management tower	•	•	•	•	•
Clear Lexan® bins and pans	•	•	•	•	•
Climate-control drawer with express chill, express thaw, select temp	•	•	•	•	•
High-humidity sealed produce pan with full-extension slides	•	•	•	•	•
Adjustable sealed deli pan with full-extension slides	•	•	•	•	•
Spillproof glass shelves	6/1 drop-down	6/1 drop-down	6/1 drop-down	6/1 drop-down	6/1 drop-down
Adjustable door bins	4	4	4	4	4
Gallon door storage	•	•	•	•	•
Sealed dairy compartment	2	2	2	2	1
Glass-covered butter dish	•	•	•	•	•
Wine caddy	•	•	•	•	•
Freezer section					
All-level halogen light tower	•	•	•	•	•
Utility baskets with full-extension slides	2	2	2	2	2
Adjustable wire shelves	5	5	5	5	5
Adjustable door bins	3	5	3	5	3
Automatic icemaker	•	•	•	•	•
Removable ice storage bin	•	•	•	•	•
General features					
Sabbath mode kit**	ZSAB1	ZSAB1	ZSAB1	ZSAB1	ZSAB1
Disappearing electronic glass touch dispenser controls with proximity sensors	•		•		•
Extra-tall dispenser with cubes, crushed ice and chilled water	•		•		•
GE water and ice filtration system	•	•	•	•	•
	Stainless steel–wrapped models only	Stainless steel–wrapped models only	Stainless steel–wrapped models only	Stainless steel–wrapped models only	Stainless steel–wrapped models only
Monogram professional handles	ZISP model only		ZISP model only		
Concealed door hinge	•	•	•	•	•
Easy-access hinged grille	•	•	•	•	•
Four-point leveling system	•	•	•	•	•
Adjustable door stop (90°/130°)	•	•	•	•	•
	Black Black Black	N/A	Black Black Black	N/A	Black Black
Dispenser color(s)					
	Stainless steel Stainless steel Black	Stainless steel Black	Stainless steel Stainless steel Black	Stainless steel Black	Stainless steel Black
Steel toekick color(s)	•	•	•	•	•
115 volts/20 amps	•	•	•	•	•
Overall dimensions (WxHxD in inches)	48 x 84 x 23-7/8	48 x 84 x 23-7/8	42 x 84 x 23-7/8	42 x 84 x 23-7/8	36 x 84 x 23-7/8
Approx. shipping weight (lbs.)	775	775	725	725	675
Limited warranty**	2-year	2-year	2-year	2-year	2-year
Limited warranty on sealed refrigeration system**	5-year	5-year	5-year	5-year	5-year
Limited warranty on sealed system parts**	12-year	12-year	12-year	12-year	12-year
	*Door panels required. Accepts 1/4" framed panels or 3/4" overlay panels. Refer to pg. 186 for customization options. Panel dimensions available on monogram.com. **See written warranty for details.				

**For kosher kitchens, an optional kit allows Monogram side-by-side refrigerators to operate in Sabbath mode.



36" built-in French-door bottom-freezer refrigerators

	ZIPS360NH ZIPP360NH ZIP360NH
Description	
	36" built-in French-door bottom-freezer refrigerator
Capacity	
Total (cu. ft.)	20.5
Fresh-food section	
Upfront electronic controls with digital readouts	•
Multi-shelf air management tower	2
Glass front produce drawers with full-extension soft close slides	•
Deli drawer with full-extension, soft-close slides	•
Stainless steel trimmed glass shelves	4
Adjustable door bins	•
Gallon door storage	2
Freezer Section	
Freezer drawer with full-extension slides	•
Independent utility basket with full-extension slides	•
Automatic icemaker	•
Removable ice storage bin	•
GE advanced water filtration system	•
General features	
Concealed door hinge	•
Stainless steel tubular handle	•
Monogram professional handle	•
Easy-access hinged grille	•
Handle side trim kit	•
Master light control switch	•
Four-point leveling system	•
Adjustable door stop (90°/130°)	•
	Stainless steel Stainless steel Black
Toekick color	
115 volts/20 amps	•
Overall dimensions (WxHxD in inches)	36 x 84 x 28-11/16 (inc. handles)
Approx. shipping weight (lbs.)	675
Limited warranty**	2-year
Limited warranty on sealed refrigeration system**	5-year
Limited warranty on sealed system parts**	12-year
	*Custom door panel required. Accepts 1/4" framed panels or 3/4" overlay panels. Refer to pg. 186 for customization options. **See written warranty for details.



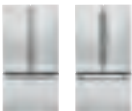
36" built-in bottom-freezer refrigerators

	ZICP360NHRH ZICP360NHLH	ZICS360NHRH ZICS360NHLH ZIC360NHRH ZIC360NHLH
Description		
	36" built-in refrigerator	36" built-in refrigerator
Capacity		
Total (cu. ft.)	21.33	21.33
Fresh-food section		
Upfront electronic controls with digital readouts	•	•
Multi-shelf air management tower	•	•
Sealed adjustable-humidity produce pans with easy access lids and full-extension slides	2	2
Sealed deli pan with full-extension slides	2	2
Spillproof glass shelves	4 adj./1 fixed	4 adj./1 fixed
Adjustable door bins	6	6
Gallon door storage	•	•
Sealed dairy compartment(s)	2	2
Glass-covered butter dish	•	•
Wine caddy	•	•
Freezer section		
Freezer drawer with full-extension slides	•	•
Independent utility basket with full-extension slides	•	•
Automatic icemaker	•	•
Removable ice storage bin	•	•
General features		
ENERGY STAR® qualified	•	•
Sabbath mode kit†	ZSAB1	ZSAB1
GE water filtration system	•	•
Concealed door hinge	•	•
Monogram professional handle	•	
		Stainless steel-wrapped models only
Stainless steel tubular handle		
Easy-access hinged grille	•	•
Unified grille kit	ZUGPP2	ZUGSS2/ZUG2
Handle side trim kit		ZKHCT
Master light control switch	•	•
Four-point leveling system	•	•
Adjustable door stop (90°/130°)	•	•
	Integrated stainless steel	Stainless steel Black
Toekick color		
115 volts/20 amps	•	•
Overall dimensions (WxHxD in inches)	36 x 84 x 28-11/16 (inc. handles)	36 x 84 x 23-7/8
Approx. shipping weight (lbs.)	675	675
Limited warranty**	2-year	2-year
Limited warranty on sealed refrigeration system**	5-year	5-year
Limited warranty on sealed system parts**	12-year	12-year
	*Door panels required. Accepts 1/4" framed panels or 3/4" overlay panels. Refer to pg. 186 for customization options. **See written warranty for details.	



36" built-in all-refrigerators and all-freezers

	ZIR360NHRH ZIRS360NHRH ZIRS360NHLH ZIRP360NHRH ZIRP360NHLH	ZIF360NHLH ZIFS360NHRH ZIFS360NHLH ZIFP360NHRH ZIFP360NHLH
Description		
	36" built-in all-refrigerator	36" built-in all-freezer
Capacity		
Total (cu. ft.)	21.97	21.92
Interior		
Upfront electronic controls with digital readouts	•	•
	6 adjustable/ 1 full-width fixed	
Spillproof glass shelves		
Sealed snack pans with full-extension slides	2 regular	
Adjustable-humidity produce pans with easy-access lids and full-extension slides	2 extra-large	
Wine caddy	•	
		5 adjustable/1 fixed/ 1 full-width fixed
Wire shelves		
Wire baskets with full-extension slides	2 regular, 4 large	2 regular, 4 large
Wire baskets with easy-access lids and full-extension slides	2 extra-large	2 extra-large
Door interior		
Door bins	4	8
Gallon door bins	2	2
Sealed dairy compartment	2	
Glass-covered butter dish	•	
General features		
ENERGY STAR qualified	•	
Sabbath mode kit*	ZSAB1	ZSAB1
Sealed system design	Automatic defrost	Automatic defrost
GE water and ice filtration system		•
	ZUG2 (for ZIR360 models) ZUGSS2 (for ZIRS360 models) ZUGPP2 (for ZIRP360 models)	ZUG2 (for ZIF360 models) ZUGSS2 (for ZIFS360 models) ZUGPP2 (for ZIFP360 models)
Unified grille kit for side-by-side installation		
Four adjustable rollers	•	•
Stainless steel tubular handle	ZIRS model only	ZIFS model only
Monogram® professional handle	ZIRP model only	ZIFP model only
Concealed door hinge	•	•
Easy-access hinged grille	•	•
Four-point leveling system	•	•
Adjustable door stop (90°/130°)	•	•
	Black Stainless steel Stainless steel	Black Stainless steel Stainless steel
Steel toekick color(s)		
Automatic icemaker		•
115 volts/20 amps	•	•
Overall dimensions (WxHxD in inches)	36 x 84 x 24-3/4	36 x 84 x 24-3/4
Approx. shipping weight (lbs.)	675	675
Limited warranty†	2-year	2-year
Limited warranty on sealed refrigeration system†	5-year	5-year
Limited warranty on sealed system parts†	12-year	12-year
	**Door panels required. Refer to pg. 186 for customization options. †See written warranty for details.	



Free-standing French-door, bottom-freezer refrigerators

	ZWE23ESHSS	ZWE23PSHSS
Description		
	Free-standing French-door, bottom-freezer refrigerator	Free-standing French-door, bottom-freezer refrigerator
Capacity		
Total (cu. ft.)	23.1	23.1
Fresh food (cu. ft.)	15.9	15.9
Freezer (cu. ft.)	7.2	7.2
Fresh-food section		
Upfront electronic controls with digital readouts	•	•
Showcase LED lighting	•	•
Water filter indicator light	•	•
	3 full-size/ 1 QuickSpace™	3 full-size/ 1 QuickSpace
Adjustable spillproof glass shelves		
Sealed adjustable-humidity drawers	2	2
Sealed adjustable-temperature full-width deli drawer	1	1
Gallon door bins	6 total, 4 adjustable	6 total, 4 adjustable
Dairy compartment	Drop down tray	Drop down tray
Freezer section		
Showcase LED lighting	•	•
Automatic icemaker	•	•
	2 full-width (w/ ice bucket)	2 full-width (w/ ice bucket)
Pull-out freezer baskets		
General features		
ENERGY STAR qualified	•	•
GE water filtration system for water and ice	Advanced Filtration System (RPWF)	Advanced Filtration System (RPWF)
Counter-depth design	•	•
Stainless steel tubular handles	•	
Monogram professional handles		•
	Stainless steel with stainless steel sides	Stainless steel with stainless steel sides
Color appearance		
Concealed door hinges	•	•
120 volts/15 amps	•	•
Overall dimensions (WxHxD in inches)	35-3/4 x 69-7/8 x 31-1/4	35-3/4 x 69-7/8 x 31-1/4
Approximate shipping weight (lbs.)	407	407
Limited warranty*	1-year	1-year
Limited warranty on sealed refrigeration system*	5-year	5-year
	*See written warranty for details.	

†For kosher kitchens, an optional kit allows Monogram bottom-freezer refrigerators to operate in Sabbath mode.

*For kosher kitchens, an optional kit allows Monogram all-refrigerators and all-freezers to operate in Sabbath mode.



Free-standing side-by-side refrigerators

Description	ZFSB25DXSS
	Free-standing counter-depth side-by-side refrigerator
Capacity	
Total (cu. ft.)	24.6
Fresh food (cu. ft.)	15.3
Freezer (cu. ft.)	9.3
Fresh-food section	
Upfront electronic controls with digital readouts	•
Tri-level light system	•
Multi-shelf air management tower	•
Clear bins and pans	•
Climate-control drawer w/express chill, express thaw, select temp	•
Sealed adjustable-humidity produce pan	•
Sealed deli pan	•
Adjustable spillproof glass shelves	3
Door bins	5 (adjustable)
Gallon door storage	•
Dairy compartment	•
Wine caddy	•
Freezer section	
Interior light	•
Utility baskets	3 (2 full-extend)
Adjustable wire shelves	2 (1 slide-out)
Tilt-out wire door bins	3 (2 adjustable)
Integrated Ice™ system	•
General features	
Counter-depth design	24"-deep cabinet
Stainless steel tubular handle	•
Color appearance	Stainless steel wrap
Electronic dispenser controls	•
Extra-tall dispenser w/cubes, crushed ice and chilled water	•
GE water filtration system for water and ice	•
Concealed door hinge	•
115 volts/20 amps	•
Overall dimensions (WxHxD in inches)	36 x 72 x 29-1/2 (including handles)
Approx. shipping weight (lbs.)	493
Limited warranty*	1-year
Limited warranty on sealed refrigeration system*	5-year
	*See written warranty for details.



Double-drawer refrigerator

Description	ZIDI240HII* ZIDS240HSS
	24" refrigerated drawers
Performance	
Total capacity	5.0 cu. ft.
Defrost type	No frost
Convenience	
Electronic adjustable temperature control	•
Digital temperature readout (°F)	•
2 full-extension drawers with heavy-duty slides	Fresh food
Fold-down shelf	Top drawer
Movable vertical divider	Top drawer
Movable horizontal divider	Top drawer
Removable bin	Bottom drawer
LED lighting	Each drawer
Appearance	
Case color	White
	Custom panel Stainless steel
Drawer color	Black** Stainless steel
Toe-kick color	Custom handle required Stainless steel tubular
Handle	
Accepts 3/4" custom panels	ZIDI240HII only
Accepts custom handles	ZIDI240HII only
General features	
Installation options	Built-in
Flush installation	•
Leveling legs	•
Sealed system design	Condenser/evaporator
Overall dimensions† (WxHxD in inches)	23-3/4 x 34-1/2 x 24-7/8
Amps @ 120 volts	15
Limited warranty††	1-year
Limited warranty on sealed refrigeration system††	5-year
	*Requires custom panel. **Black installed, stainless included. †Height excluding legs, including hinge; depth excluding handle. ††See written warranty for details.



Fresh-food refrigerator

Description	ZIFI240HII* ZIFS240HSS
	24" fresh-food refrigerator
Performance	
Total capacity	5.4 cu. ft.
Defrost type	Cycle defrost
Convenience	
Electronic adjustable temperature control	•
Removable spillproof glass shelves	2 full-size, 1 QuickSpace™
Vegetable drawer with full-extension slides	•
LED lighting	•
Appearance	
Case color	Black
	Black** Stainless steel
Toe-kick color	Custom handle required Stainless steel tubular
Handle	
Accepts 3/4" custom panels	ZIFI240PII only
Accepts custom handles	ZIFI240PII only
General features	
Installation options	Built-in or free-standing
Flush installation	•
Leveling legs	•
Sealed system design	Condenser/evaporator
110° door stop	•
Overall dimensions† (WxHxD in inches)	23-3/4 x 34-1/2 x 24-7/8
Amps @ 120 volts	15
Limited warranty††	1-year
Limited warranty on sealed refrigeration system††	5-year
	*Requires custom panel. **Black installed, stainless included. †Height excluding legs, including hinge; depth excluding handle. ††See written warranty for details.



Bar refrigerator with icemaker

Description	ZIBI240HII* ZIBS240HSS
	24" bar refrigerator with icemaker
Performance	
Total capacity	4.25 cu. ft.
Icemaker w/pull-out bin	•
Defrost type	No frost
Convenience	
Electronic adjustable temperature control	•
Encapsulated spillproof glass shelves	1 full-size, 2 half-size
Wine/bottle shelf with full-extension slides and cherrywood front	1 half-size
Ice scoop	•
LED lighting	•
Appearance	
Single door	Right-hinged only
Case color	Black
	Black** Stainless steel
Toe-kick color	Custom handle required Stainless steel tubular
Handle	
Accepts 3/4" custom panels	ZIBI240PII only
Accepts custom handles	ZIBI240PII only
General features	
Installation options	Built-in or free-standing
Flush installation	•
Leveling legs	•
Sealed system design	Condenser/evaporator
110° door stop	•
Overall dimensions† (WxHxD in inches)	23-3/4 x 34-1/2 x 24-7/8
Amps @ 120 volts	15
Limited warranty††	1-year
Limited warranty on sealed refrigeration system††	5-year
	*Requires custom panel. **Black installed, stainless included. †Height excluding legs, including hinge; depth excluding handle. ††See written warranty for details.



Outdoor/Indoor refrigerator

Description	ZDOD240HSS
	24" undercounter outdoor/indoor refrigerator
Performance	
Total capacity	5.4 cu. ft.
Outdoor temperature performance	45°F (7.2°C) – 120°F (38°C)
Interior temperature range	34°F–40°F
Defrost type	Auto cycle defrost
Convenience	
Digital temperature readout (°F)	•
Adjustable cold control	Upfront, recessed
Removable spillproof glass shelves	2 full-size, 1 QuickSpace™
Beverage shelves with full-extension slides	2 half-size
LED lighting	•
Appearance	
Door and case color	Full stainless steel wrap
Toe-kick color	Stainless steel
Stainless steel professional-style handle	•
General features	
Installation options	Built-in or free-standing
Removable stainless steel top cap for built-in capability	•
Leveling legs	4, 2 fixed
Sealed system design	Condenser/evaporator
Lock and key	•
Vinyl cover, Stainless Steel Magic and polishing cloth	•
110° door stop	•
Cabinet/door insulation	Foam
Overall dimensions* (WxHxD in inches)	23-3/4 x 34-1/4–34-3/4 x 23-3/4
Outdoor UL-qualified	•
Limited warranty**	1-year
Limited warranty on sealed refrigeration system**	5-year
	*Height includes fully-retracted support legs and door hinge. **See written warranty for details.



Wine reserves and beverage centers

	ZDWI240HII* ZDWR240H8S	ZDBI240HII* ZDBR240H8S
Description	Wine reserve with digital control	Beverage center with digital control
Performance		
Total capacity	57 wine bottles	10 wine bottles plus 126 12-oz. cans or total of 146 12-oz. cans
Removable spillproof glass shelves		2 full-size, 1 QuickSpace
Wine racks with full-extension slides	5 full-size/ 2 half-size	2 half-size
Convenience		
Red or white wine temperature setting	•	
Adjustable temperature control	•	•
Interior light on/off switch	•	•
Appearance		
Reversible door hinges	•	•
Case color	Black	Black
Toekick color	Black** Stainless steel	Black** Stainless steel
Handle	Custom handle required (ZDWI) Stainless steel tubular	Custom handle required (ZDBI) Stainless steel tubular
Accepts 3/4" custom panels	ZDWI-model	ZDBI-model
Accepts 3/4" custom handles	ZDWI-model	ZDBI-model
Tempered-glass door	•	•
Unfinished cherry-wood shelf fronts	7	2
General features		
Installation options	Built-in or free-standing	Built-in or free-standing
Overall dimension† (WxHxD in inches)	23-3/4 x 34-1/4–34-3/4 x 23-3/4	23-3/4 x 34-1/4–34-3/4 x 23-3/4
Amps @ 120 volts	15	15
Limited warranty††	1-year	1-year
Limited warranty on sealed refrigeration system††	5-year	5-year
	*Requires custom panel. **Black installed, stainless included. †Height excluding legs, including hinge; depth excluding handle. ††See written warranty for details.	



Icemakers

	ZDIS15SSH	ZDIC150ZBB
Performance		
Daily ice production	50 lbs.	50 lbs.
Storage bin	25 lbs.	25 lbs.
Convenience		
Automatic shutoff	•	•
Ice scoop	•	•
LED interior light	•	•
Water filter	•	•
Electronic control with push pads	•	•
Cycles	On/off/clean	On/off/clean
Clean light	•	•
Appearance		
Colors	Stainless steel	Black
Full-length door	•	•
Handle	Stainless steel tubular	Black visor
Accepts 3/4" custom panels*		ZIP75BB
Reversible door	•	•
100° door stop	•	•
General features		
Overall dimensions (WxHxD in inches)	14-13/16 x 34–34-1/2 x 23-5/16	14-13/16 x 34–34-1/2 x 23-5/16
Amps @ 115 volts	5.3	5.3
Drain pump accessory kit	ZPK2	ZPK2
Approx. shipping weight (lbs.)	110	110
Limited warranty**	1-year	1-year
Limited warranty on sealed refrigeration system**	5-year	5-year
	*Does not fit flush with surrounding cabinetry. **See written warranty for details.	



Compactors

	ZCGS150RSS ZCGP150RII
Performance	
1/3-HP motor	•
Compression ratio (average)	75% reduction or 4:1
Automatic anti-jamming feature	•
Convenience	
Slide-out compactor drawer	•
Lock/start control with removable key	•
Appearance	
Colors available	Stainless steel Custom panel
Accepts 3/4" custom panel/custom handle	Customer-supplied
General features	
Overall dimensions (WxHxD in inches)	14-7/8 x 33-3/4–35 x 23
Amps @ 120 volts	7.0
Approx. shipping weight (lbs.)	141
Limited warranty*	1-year
	*See written warranty for details.



Built-in dishwashers

	ZDT870SSFSS ZDT870SPFSS ZDT870SIFI*	ZDT800SSFSS ZDT800SPFSS ZDT800SIFI*	ZBD1870NSS ZBD1850NII*
Description	24" stainless steel dishwasher with 102 jets, LED interior lighting and 3rd rack	24" stainless steel dishwasher with 102 jets and LED interior lighting	18" compact dishwasher
Variable cycles and options			
102 spray jet wash system	•	•	
Auto Sense/Heavy/Normal/Light/Rinse/Express/eWash	Auto Sense/Heavy/Normal/Light/Rinse/Express/eWash	Auto Sense/Heavy/Normal/Light/Rinse/Express/eWash	Normal/Rinse Only/Heavy/Light/Glasses/SpeedWash™/Air Dry
Bottle Wash Jets	•	•	
Wash System	Wash Zones	Wash Zones	5-Level; Standard
Presoak	•	•	
Delay start option	1-12 hour	1-12 hour	1-24 hour
Wash temp - boost, sanitize	•	•	
Power dry, Max Dry w/multi-speed fan	•	•	
Water filtration	100% with removable filter	100% with removable filter	3-stage manual clean
Hard-food disposer	Piranha™	Piranha	
Wash arms	Reversing lower blade, middle blade and side jets	Reversing lower blade, middle blade and side jets	3-direct feed
Side jets	•	•	
Dedicated silverware jets	•	•	
Automatic temperature control	•	•	
Clean sensor	•	•	
Rinse aid dispenser	w/indicator & adjustment	w/indicator & adjustment	w/indicator & adjustment
Audible end-of-cycle signal	•	•	
Exterior status LED	•	•	
Cycles and options	7/11	7/11	7/11
Electronic top controls	with LCD display	with LCD display	•
Features			
NSF-certified to sanitize	•	•	
ENERGY STAR® qualified /CEE Tier 1	• / •	• / •	
Interior	Stainless steel	Stainless steel	Stainless steel
Interior lighting	LED	LED	
Rack finish/color	Bronze Mist	Bronze Mist	Pearlescent Gray
Full-extension 3rd rack cutlery tray	•		
Full-extension upper rack	•	•	
Adjustable upper rack	•	•	
Upper rack	1/2 fixed tines, 1/2 fold down tines	1/2 fixed tines, 1/2 fold down tines	2 cup shelves
Utility shelves	2 Stem Safe	2 Stem Safe	2 plastic
Full-extension lower rack	•	•	
Lower rack fold-down tine flexibility	1/2 multi-position fold down tines, 1/2 reversible tines	1/2 multi-position fold down tines, 1/2 reversible tines	
Silverware basket	3-pc. with Soft-Touch handle/cell covers	3-pc. with Soft-Touch handle/cell covers	Standard
Floor Protection	Yes, with alert	Yes, with alert	
Quiet features			
Sound level	39 dBA	42 dBA	60 dBA
Appearance			
Door panel/handle color	European stainless steel Professional stainless steel Custom panel, custom handle	European stainless steel Professional stainless steel Custom panel, custom handle	European stainless steel Custom panel, custom handle
True flush/fully integrated door	• / •	• / •	
Leveling system	4 point/front adjustable with rear wheels	4 point/front adjustable with rear wheels	Leveling legs
Toekick	Stainless steel	Stainless steel	Black sealed
Variable speed wash and drain pumps	•	•	
General features			
Overall dimensions (HxWxD in inches)	34 x 23-3/4 x 24**	34 x 23-3/4 x 24**	17-3/8-18 x 32-35 x 24
Amps @ 120 volts	9.0	9.0	9.0
Approx. shipping weight (lbs.)	139	119	60
Limited warranty***	1-year	1-year	1-year
	*Requires custom wood panel and handle **24" depth includes 3/4" custom panel ***See written warranty for details.		

NSF Protocol for Sanitization and Cleaning Performance of Household Spray-Type Dishwashers (1997)

All full-size Monogram® dishwashers are NSF-certified to reduce 99.999% of bacteria.

ACKNOWLEDGEMENTS

Special thanks to those who have helped make the Monogram® Home possible.



Jewelry Box Kitchen
Pictured on pages 34, 35, 42, 100, 101, 166 and 167.

Cabinetry Bentwood Luxury Kitchens
972.227.6855 • bentwoodkitchens.com
Style: Melrose beaded inset
Finish: Shiraz on Alder with custom accents Silver Leaf on Maple

Plumbing KOHLER Co.
800.4.KOHLER • kohler.com
Bakersfield™ self-rimming kitchen sink K-5832-3 K4
Para® wall-mount kitchen bridge faucet K-6132-3

Flooring Solistone
800.246.2156 • solistone.com
Style: Haisa, HGRY LP-01, HGRY DP-01
Finish: Light polished and dark polished, mosaic

Backsplash/Cabinetry Glazing r-squared hines ltd
Cabinetry Glazing 843.722.1593 • oldmirrorglass.com
Style: Restoration Mirrorglass with rosettes
Finish: F1-4
Style: Hand blown glass
Finish: Clear

Lighting One Source Lighting and Design, LLC
270.877.2221 • 2lightu.com
Eureka directional trims and housings, 1043B-H-SC

Hardware Rocky Mountain Hardware
888.788.2013 • rockymountainhardware.com
Quatrafoil Cabinet Knob, Large, CK10011
Paris Cabinet Pull, 4", CK10050
6" Offset Curved Rail Grip, G260
White Bronze, Brushed Finish



Loft Kitchen
Pictured on pages 30, 69, 104 and 105.

Cabinetry Bentwood Luxury Kitchens
972.227.6855 • bentwoodkitchens.com
Style: Klein Flat/Strata Effect
Finish: Custom finish

Plumbing KOHLER Co.
800.4.KOHLER • kohler.com
Kohler, WI 53044

Sink Vault™ large single kitchen sink with single-hole faucet drilling, K-3821-1
Faucet: Purist® Primary Swing Spout Kitchen Faucet without Spray, K-7507-CP

Backsplash Ann Sacks Tile and Stone, Inc.
Portland, OR 97211
800-278-8453 • annsacks.com
Product: Lucian glossy glass tile, 2" x 12"
Color: Mist, Azure, and Slate

Flooring Dal-tile
Dallas, TX 75217
214-398-1411 • daltile.com
Product: Fabrique™ Colorbod™ Porcelain
Color: Blanc Linen, P685

Decorative Lighting 3form Light Art
Seattle, WA 98134
800-726-0126 • 3-form.com/lightart
Product: Basket Fixture
Material and color: Varia Ecoresin® in Translucent Suede

Task Lighting One Source Lighting and Design, LLC
Vinegrove, KY 40175
270-877-2221 • 2lightu.com
Product: Eureka directional trims and housings, 1043B-H-SC



Professional Kitchen in Monogram Design Center
Pictured on pages 8, 9, 10, 11, 12, 13, 50 and 76.

Cabinetry Bentwood Luxury Kitchens
972.227.6855 • bentwoodkitchens.com
Style: Nouveau
Finish: Soy on Rift-cut White Oak

Wall Tile Ann Sacks Tile & Stone, Inc.
800.278.8453 • annsacks.com
Style: Capriccio
Finish/size: Dove, 3" x 6"

Plumbing KOHLER Co.
800.4.KOHLER • kohler.com
Poise™ Large/Medium Undercounter Kitchen Sink, K-3160
Finish: Stainless Steel
Evoke™ Single-Control Pullout Kitchen Faucet, K-6331
Finish: Vibrant Stainless



White Kitchen in Monogram Design Center
Pictured on pages 33, 36, 59, 60, 61, 72, 133 and 152.

Cabinetry Bentwood Luxury Kitchens
972.227.6855 • bentwoodkitchens.com
Style: Custom Flat Panel, Inset Style
Finish: Hand Painted White on Maple

Wall Tile Susan Jablon Mosaics
607.748.2302 • susanjablonmosaics.com
Style: Marbleized Glass Tile, PB47
Finish/Size: Dark Gray, ¾" x ¾"

Plumbing KOHLER Co.
800.4.KOHLER • kohler.com
PRO TaskSink™ tile-in/flush-mount single-bowl kitchen, K-3375-3-NA
Finish: Stainless Steel
Avatar® sink faucet with 9" gooseneck, K-6356-CP
Finish: Polished Chrome



Studio Kitchen in Monogram Design Center
Pictured on pages 80 and 118.

Cabinetry Bentwood Luxury Kitchens
972.227.6855 • bentwoodkitchens.com
Style: Estate
Finish: Composite Horizontal Grain Fir, Natural

Wall Tile Ann Sacks Tile & Stone, Inc.
800.278.8453 • annsacks.com
Style: Bliss
Finish/Size: Breeze, Matte Finish, 4" x 8"

ACKNOWLEDGEMENTS

Special thanks to those who have helped make the Monogram® Home possible.



Coastline Kitchen
Pictured on pages 16, 17, 18, 38, 48, 49, 70, 71, 92, 93, 94, 95, 96, 97, 106, 136 and 168.

- CabinetryBentwood Luxury Kitchens
972.227.6855 • bentwoodkitchens.com
Style: Sona
Finish: Teak
- CountertopsDuPont™ Surfaces
888.811.9389 • countertops.dupont.com
Product: Zodiac® Quartz Surfaces
Color: Cloud White
- PlumbingKOHLER Co.
800.4.KOHLER • kohler.com
8 Degree™ offset double basin kitchen sink K-3672, Stainless Steel
8 Degree™ single-basin entertainment sink K-3671, Stainless Steel
Crevasse® prep sink with Cynchronus™ rinsing technology - K-6448
Karbon® Deck-mount Lavatory Faucet with Silver Tube K-6268-C11, Vibrant Brushed Nickel (-BN)
Karbon® Wall Mount Lavatory Faucet with Silver Tube K-6269-C11, Vibrant Brushed Nickel (-BN)
- FlooringAnn Sacks Tile & Stone, Inc.
800.278.8453 • annsacks.com
Style: Texere, AS12140-08
Finish: Dove, 23.3" X 23.3"
- Wall TileSusan Jablon Mosaics
607.748.2302 • susanjablonmosaics.com
Style: 4mm
Finish: Pure White
- LightingCirca Lighting
877.762.2323 • circalighting.com
Yoke Pendant with Glass Shade, Polished Nickel, White Glass Shade
Small Simple Scallop Pendant, Soft Silver, Silk Hardback Shade
Petal Table Lamp with Gray Mirrored Base, Soft Silver, Silk Hardback Shade
- HardwareRocky Mountain Hardware
888.788.2013 • rockymountainhardware.com
Cabinet Pull, CK260, CK262, Rail Grip, G263
Rail Grip, G261, G263
Metro Entry Set, G225, G226
Metro Passage Set, K207, E230
White Bronze, Light Patina Finish
- Wood FlooringBOA-FRANC / MIRAGE
800.463.1303 • miragefloors.com
Style: Mirage Engineered Hardwood Flooring
Finish: Bali Coco on Canadian Breza, Cashmere* MD Finish
Nevada on Maple, Cashmere* MD Finish



English Kitchen
Pictured on pages 122 and 170.

- CabinetryBentwood Luxury Kitchens
972.227.6855 • bentwoodkitchens.com
Style: Orleans
Finish: French Country/Mint, Chocolat
- HardwareRocky Mountain Hardware
888.788.2013
rockymountainhardware.com
cabinetry knobs/pulls—Cabinet Drop Pull, CK370, with Round Cabinet Rose, CKR30; Roswell Cabinet Knob, CK252, with Round Cabinet Rose, CKR20; custom appliance panel pulls—Maddox Grip, G580
refrigerator pulls—Sun Valley Grip, G624
door sets—Scroll Lever, L127, with Square Interior/Exterior Escutcheon, E447
All hardware in White Bronze, Light Patina Finish
- PlumbingKOHLER Co.
800.4.KOHLER • kohler.com
Alencon Lace™ design on Dickinson™ Undercounter Kitchen Sink, K-14579-KG-G9, Sandbar; Purist® Wall-mount Faucet, K-T14415-3-BN, Brushed Nickel; Undertone™ Undercounter Kitchen Sink, K-3336, Stainless Steel; Purist® Widespread Faucet, K-14406-3-BN, Brushed Nickel
- WindowsPella Windows & Doors
800.772.1601 • pella.com
Architect Series® Casements, Transoms, French Doors, Oil-Rubbed Bronze Hardware
- LightingCirca Lighting
877.762.2323 • circalighting.com
Six Light Square Tube Chandelier, Antique Nickel, Custom Shade; French Deco Horn Sconce, Antique Nickel, Linen Shade; Classic Trophy Lamp, Antique Nickel, Custom Shade; Frame Makers 18" Picture Light, Antique Nickel
- RugAnabel's Oriental Rugs
502.895.9595 • anabelsorientalrugs.com
Pakistani Peshawar, hand-knotted, 10' x 14'



Glass Tile Kitchen
Pictured on pages 54 and 130.

- CabinetryBentwood Luxury Kitchens
972.227.6855 • bentwoodkitchens.com
Style: Estate
Finish: Natural Ebony
- Flooring/BacksplashAnn Sacks Tile & Stone, Inc.
800.278.8453 • annsacks.com
Flooring Style: Lake Garda Glass
Finish/Size: Iceberg, 3/8" x 6" x 12"
Wall Tile Style: Lake Garda Glass
Finish/Size: Chrome Green, Lemonade, Cactus, Iceberg, Waxpaper, 1" x 2" mesh-mounted
- PlumbingKOHLER Co.
800.4.KOHLER • kohler.com
Verity® Apron-front Countertop Kitchen Sink, K-3084-1-NA
Finish: Stainless Steel
Essex® Kitchen Sink Faucet, K-8763-CP
Finish: Polished Chrome



French-Door Kitchen
Pictured on cover and pages 2, 3, 4, 5, 7, 23, 24, 25, 26, 47, 103, 110, 114, 154, 156, 157, 158, 159 and 161.

- CabinetryBentwood Luxury Kitchens
972.227.6855 • bentwoodkitchens.com
Style: Palmer
Finish: Gray and silver smoke on paint grade maple
- FlooringWellborn + Wright
800.785.6323 • wellbornwright.com
Style: Reclaimed Oak – Smooth, Herringbone pattern
Finish: Natural
- PlumbingKOHLER Co.
800.4.KOHLER • kohler.com
Poise® undermount kitchen sink, K-3158-H-NA
Evoke® Single-hole kitchen sink faucet, K-6333-VS

ENERGY STAR®-QUALIFIED MODELS



ENERGY STAR standards

- All Monogram® dishwashers have earned the ENERGYSTAR label.
- Full-size Monogram dishwashers hold up to 16 place settings at once, so it's possible to wash every dish in a single load.

Monogram dishwashers



ZDT870SSFSS
ZDT870SPFSS
ZDT870SIFII
ZDT800SSFSS



ZDT800SPFSS
ZDT800SIFII
ZBD9900RII



Monogram refrigerators

Advanced temperature-management technology, variable-speed compressors and electronic controls make Monogram refrigerators among the most efficient available.

ZIR360NHRH	ZIC360NHLH	ZICS360NHRH
ZIRS360NHLH	ZIC360NHRH	ZWE23ESH
ZIRS360NHRH	ZICP360NHLH	ZWE23PSH
ZIRP360NHRH	ZICP360NHRH	
ZIRP360NHLH	ZICS360NHLH	



MONOGRAM ADA-COMPLIANT MODELS



Microwave ovens:
(in the built-in configuration)

ZEB1226
ZEM115

Single wall ovens:

ZET1S, ZET1P, ZET1F
ZET9050, ZEK7000

Cooktops:

ZEU36, ZEU30
ZGU385N,
ZGU384N
ZHU30, ZHU36

Warming drawers:

ZJ9000, ZJ7000

Refrigerators:

ZFSB25DXSS

Pro range dual-fuel

ZDP304N
ZDP366N
ZDP364NR
ZDP364ND
ZDP484NG
ZDP486NR
ZDP486ND

Pro range rangetop

ZGU366NP
ZGU364NRP
ZGU364NDP
ZGU484NGP
ZGU486NRP
ZGU486NDP

Pro range all-gas

ZGP304N
ZGP304L
ZGP366N
ZGP366L
ZGP364ND
ZGP364LD
ZGP486ND
ZGP486LD

Refrigeration modules:*

ZIFS240HSS
ZIFI240HII
ZIBS240HSS
ZIBI240HII
ZDOD240HSS
ZDWR240HBS
ZDBR240HBS
ZDBI240HII
ZDWI240HII

Undercounter icemakers:*

ZDIS15
ZDIC150

Venting hood inserts with wired remote control panel:

ZVC30L
ZVC36L
ZVC42L
ZVC48L

Telescopic downdraft venting systems:

ZVB30STSS
ZVB36STSS

Dishwasher:

ZBD1850NII
ZBD1870NSS

*Only when installed in freestanding application

CAD KITCHEN DESIGN TOOLS

Find instant inspiration with downloadable 3D Monogram® Appliance files

TAP INTO THIS INSPIRATION THREE EASY WAYS:

1. At monogram.com:

- A. GO TO MONOGRAM.COM
- B. LOCATE THE DESIRED MODEL
- C. CLICK ON THE "PRE-PLANNING" TAB FOR CAD DOWNLOAD OPTION*

Computer-aided design (CAD) files are available for many Monogram appliances. Look for the link in the Product Documentation area of product specification pages.
*AutoCAD software is required to download and view images.



2. At 2020technologies.com

You can access digital drawings of Monogram appliances through 20-20 Technologies, the standard for 3D state-of-the-art kitchen design and specification. Clients current on their 20-20 support and maintenance plan can log into 20-20's B2B portal, 2020.net, to access the catalog through the Update Center. 20-20 will include the catalog in new licenses of 20-20 Design™ as products are updated quarterly.



3. At sketchup.google.com

You can access select Monogram appliances in the Google 3D Warehouse.



GREAT KITCHENS START WITH GREAT INSPIRATION

Design is an integral part of the kitchen planning process, and it's important to start with a plan. That's why we created **SaveRoomForDesign.com**, a new blog that provides insights on remodeling trends, as well as tips and ideas from professional experts. Inspiring stories are shared every week.



MUST-VISIT DESTINATIONS FOR THE LATEST IN LUXURY KITCHENS

Monogram® Design Centers offer an inviting opportunity to experience Monogram appliances in luxurious settings, ranging from the classically simple to the artful and unexpected. Whether in New York or Chicago, you'll find a stunning variety of Monogram appliances, beautifully appointed live kitchens, product demonstrations by leading chefs and a world of design inspiration.

Plan your visit at monogram.com/kitchen-designs/design-center.



NEW YORK

Located in the Architects & Designers Building in Midtown Manhattan, this 4,000-sq.-ft. showroom includes three kitchens, a wine-themed lounge and a host of Manhattan-inspired details. Complimentary product demonstrations by Executive Chef Tageré Southwell demonstrate the exceptional performance possibilities of Monogram appliances.



CHICAGO

Part of LuxeHome's collection of premier boutiques in Chicago's historic Merchandise Mart, this center includes four fully designed kitchens, a working wet bar, dining room and lounge area. Executive Chef Jon Liddell presides over two live kitchens, giving guests a chance to get up close with the latest Monogram appliances.



MONOGRAM | DESIGN CENTER

Discover a world of savory possibilities at **allingoodfood.com**

Recipes, foodcasts and other culinary delights await.
No reservations required.



GE APPLIANCES

GE
Appliances
Appliance Park
Louisville, KY 40225
monogram.com

As an ENERGY STAR® partner, GE has determined that the appliances marked with the ENERGY STAR logo meet the ENERGY STAR guidelines for energy efficiency.

Before purchasing an ENERGY STAR qualified appliance, read important information about its estimated annual energy consumption or energy efficiency rating that is available from your retailer, monogram.com or www.energystar.gov.

Product improvement is a continuing endeavor at GE. Therefore, materials, appearance and specifications are subject to change without notice.